

**President**

A.W. (Al) Nelson

Past President

J.G. (Jim) Halliday

Vice President

S.C. (Stephen) Green

Secretary Treasurer

L.M. (Larry) Pals

Registrar

R.A. (Dick) Bassil

Executive Director

B.E. (Brian) Munday

Councillors

D.C. (Clayton) Bruce

G.D. (Grant) Cross

L.J. (Les) Frederick

D.N. (David) Marquardt

D.H. (Dirk) VandenBrink

V.A. (Vince) Ziegler

Public Members

L. (Lawrence) Kluthe (Council)

D.R. (Russell) Barnes

(Practice Review Board)

5 President's Message

Al Nelson, ALS

7 Councillor's Forum

Clayton Bruce, ALS

9 Editor's NotesBrian Munday,
Executive Director**11 Letters****14 Association Notes****21 Scaling the Heights**

John Holmlund, ALS

23 Book ReviewEpic Wanderer: David
Thompson and the Mapping of
the Canadian West**24 SPR Director's Message**

Lyll Pratt, ALS

30 SPR Corner**Case Study No. 18:
Dates of Survey**

Lyll Pratt, ALS

31 Guardpost

Dwight Wiberg, ALS

33 Professional Development

Ken Allred, ALS

35 Public Relations

Andrew Roop, ALS

**37 Alberta Sustainable
Resource Development**

Mike Michaud, ALS

39 Education Notes

- University of Calgary
- University of New Brunswick
- Southern Alberta Institute
of Technology

41 ASSMT

Mike Spencer, CET

**43 A Moment of Silence
in Memory of**Robert McCutcheon,
ALS (Hon. Life)
Don Moore (Former Member)
Kasimir Sawicki,
ALS (Ret.)**45 Discipline Decision**

Richard Schlachter, ALS

51 History

1914 "The Hoodooed Year"

**ON THE
COVER**

*The Fairmont Jasper
Park Lodge and Area*

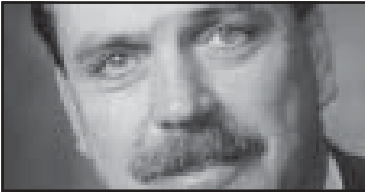
PHOTO COURTESY OF
BRANDER KPHOTOGRAPHY

EditorBrian E. Munday: munday@alsa.ab.ca**Advertising and Production**Sharon D. Stecyk: stecyk@alsa.ab.ca

Deadline dates for submission of material to ensure printing are as follows: February 15th, June 1st, September 1st, and December 1st. Opinions expressed by the editor or individual writers are not necessarily endorsed by the Council of the Alberta Land Surveyors' Association. Original articles may be reprinted with due credit given to the source and with permission of individual writers or where no writer is indicated, with the permission of the Editor. *ALS News* is published by the Alberta Land Surveyors' Association for circulation to the Association Membership. Address all correspondence to:

Alberta Land Surveyors' Association
Suite 1000, 10020 – 101A Avenue — Edmonton, Alberta T5J 3G2
Tel: 780-429-8805 or 1-800-665-2572
Fax: 780-429-3374 info@alsa.ab.ca www.alsa.ab.ca

CANADA POST PUBLICATION #40051474



president's message

by Al Nelson, ALS

Complete our AGM, do some laundry, get to Newfoundland, do some laundry, get to Saskatchewan, do some laundry, throw in some real work, an Executive meeting, a Council Meeting, a Steering Committee and ACLS in Whitehorse and one starts to get an appreciation for the stamina of past presidents of the ALSA along with the hectic schedule that Brian and staff accommodate for us throughout each and every year.

Newfoundland/Labrador

We did manage some clean laundry before arriving at Corner Brook, Newfoundland in April to participate in the East Coast deliberations. The beautiful location was surpassed only by the genuine hospitality of the Newfoundland Association and its members. Members in that area, for the most part, are dealing with severe economic restrictions as is the Association itself. Irrespective of that fact, we were treated royally along with being sponsored to a fairly intimate relationship with an Atlantic fish and some locally brewed beverage.

Dialogue between our associations is not only fruitful but, as I see it, critical to the health and welfare of the profession across our country. What each of us does affects the others. I believe that solutions exist and will be arrived at by compiling the input from all jurisdictions collectively.

Thanks to outgoing President Robin Davis for the invitation and the hospitality. We very much look forward to continuing the excellent relationship with new President Max Batten.

Executive Committee

Our first Executive Committee meeting in May led to the creation of committees and terms of reference at

I look forward to the next year and to hearing personally from any of you who have issues, suggestions or the burning need to help out one of the committees.

the next Council meeting and at the subsequent Steering Committee meeting. There is presently a large overlap between various committees' terms of reference as well as a huge workload. Executive and Council are committed to consider restating these issues and terms of reference in order that each Committee has reasonable expectations to deliver its mandate to the membership as well as to do so without burning out our dedicated members. Remember that it is not too late to throw your hat in the ring and help out. There are many interesting and important issues on the table with Legislation Ad Hoc, Section 9 Ad Hoc, Committee on the Future and the always interesting standing Committees. Brian will be happy to hear from you as will I.

Saskatchewan

Saskatchewan's meeting seemed pretty much like home. Not only were there many familiar faces, but many familiar issues. The "Four Seasons" Golf Tournament literally demonstrated all possible weather patterns and temperatures within a five hour time span. The two trophies awarded for the tournament were claimed by Vince Voss and myself. Certain members there may have commented that Alberta Land Surveyors are sissies for not planning a golf tournament in the snow. There are some

local flavour issues that surprised me, such as:

- The annual Regina Goose Roundup (they actually herd them up and haul them away).
- You have to turn your back when they pour a cocktail for you at the hospitality suite. I only imagined this would occur in the Maritimes. The upside was that you were able to trust each and every one of them. Yeah Right!

Saskatchewan is considering what to do with the issues of government plan checking, digital searches, digital submissions and registration, professional entry standards, declining membership demographics and other issues very near and dear to our own hearts. Congratulations to President Barry Clark for a masterful performance at his meeting and to new President Jim Clarke who will renew some old acquaintances when he visits Alberta. We are fortunate to have the relationship we do with our friends from Saskatchewan.

Committee on the Future

Our new Committee on the Future will have a daunting task: to set into motion a process to consider a maze of issues that face our Association and, in many respects, represent opportunities for the future. In some instances, we must attempt to resolve some issues that are not in line with other provinces or jurisdictions. All of the provinces, including Alberta, have expressed concerns relating to declining membership and the very real need to attract new candidates to a career in land surveying. Having said that, many of our members practice in specialty areas having little to do with cadastral work. This is just one of the examples that have

...continued on page 44



councillor's forum

by Clayton Bruce, ALS

Having just graduated from the Practice Review Board after four years of service, I would like to say a few things about Systematic Practice Review.

First of all, it was a great experience, a learning experience and a privilege to serve on the Board. It was great to work with surveyors who specialize in different fields. A lot can be learned from the discussions that go on. We all came to common ground when it came to consideration of monumentation. The presence of the public member is very valuable. He would bring us back to earth when our discussions became too technical and tell us what the public would think of the situation. The ALSA staff are experts in what they do and they do their jobs very well. A meeting never went by without discussions on posting and governing evidence—the very things surveyors love to talk about. We would never know and did not want to know the identity of the practice we were considering with the following two exceptions:

1. Our own practice or perhaps a branch office, in which case the Board member would declare a conflict and leave the meeting for that consideration.
2. The practitioner who was asked to come in or would come in voluntarily. In this case, we would know his identify when he arrived at the door. Here again, a Board member could leave if there was a conflict.

The ALSA staff, with the exception of the recorder, is not present during final discussions and voting. Check lists are long and detailed but are necessary to assure everyone is treated exactly the same and to judge compliance with the Acts and Manual. Practice ratings are developed from the checklists. They are

I truly believe that Systematic Practice Review is the greatest achievement this Association has ever made.

not the end all, but do give an indication of the practice's strengths and weaknesses.

In my opinion, there are two areas, which could use improvement by the members: (1) proper recording of information (field notes), and (2) the use of governing evidence. However, I am sure we will all do better in Phase 3.

I think we should take a positive approach to the visit of the Director of Practice Review to our office. We can make use of his expertise in analyzing our work. By responding to any defects found, we can certainly improve our practices. The comparison with other practices across Alberta, as indicated by the average practice rating, will show us about where we stand.

Why not try to provide the Director of Practice Review with a true cross-section of your work. For example, if he looks at three products and you have three party chiefs, why not ask to have one from each? That way you have someone else's opinion.

Hints for Phase 3

1. Remember the undertakings you made from Phase 1 and 2. They will not be forgotten.
2. Always give a specific, clear answer to each of the points stated under the heading "Points to be Addressed in the Practitioner's Response." This can save you a lot of time in the long run. If you have

other comments, this can be done after this is complete.

3. If you feel you can benefit from a face-to-face meeting, you can come in voluntarily. Be prepared for a good discussion. You may be able to get some helpful hints from the members on the Board.

The Board members keep in mind that their function is mainly educational and never hesitate to remind each other of that fact.

Systematic Practice Review field staff do some really thorough investigations as they should. They preserve any conflicting evidence that they find in such a way that the practitioner can inspect it himself. For example, wooden posts or iron postholes are covered with plastic sheeting and then earth to preserve the evidence for inspection. This sure impressed me and is in keeping with the educational function of the Board.

I truly believe that Systematic Practice Review is the greatest achievement this Association has ever made. As the years go by, the standards will be raised, a level playing field will be achieved and the economy of the membership and their staff will improve.

Regional Meeting Dates for 2004-2005

Calgary

October 5, 2004
January 25, 2005
March 30, 2005

Edmonton

September 30, 2005
January 27, 2005
March 31, 2005



editor's notes

by Brian Munday, Executive Director

This spring, my oldest son, Connor, played t-ball. It was the first time he had been involved an organized team sport. It has been a lot of fun to watch all of the kids play. A number of kids had never played baseball or t-ball before; some didn't know they were to run to first base after hitting the ball or that they were supposed to drop the bat after hitting the ball. In the field, there is really no such thing as playing your position as all the kids want to catch and throw. I am trying desperately hard not to become one of those parents who always tell their kids what to do and how to do it. Other parents will know what I am talking about. Having said that, I am very proud of the way my son has been playing and how much he enjoys the game.

Perhaps, that is because he has enjoyed going to a number of Edmonton Trappers games over the years. It is professional baseball played in an intimate setting and is inexpensive family entertainment. We normally attend five or six games a year and the Trappers management always puts on a good show (i.e. Harry Potter day) even if the Trappers are having a poor season. The Trappers leave town for Texas at the end of this summer and I will be sad to see them go. I understand that both Calgary and Edmonton have been awarded Northern League franchises and the Calgary/Edmonton baseball rivalry will be renewed.

I have been a baseball fan for many years. Like any Canadian kid, I was born a hockey fan but I have developed a love and appreciation for baseball. I'm not quite sure why. Besides watching skilled players hit, catch and throw a baseball, it is also fun to second guess a team's manager about when to pinch hit for a slumping batter or replace a tiring pitcher.

One of the interesting strategic moves that a manager might make in

baseball is called the double switch. In the double switch, the manager substitutes for two players (normally the pitcher and an outfielder) at the same time with a view to getting the better batter up to the plate earlier.

At the Association office (you wondered how I was going to relate this to the Association, didn't you?) we have just completed our own version of the double switch. Cindy Chomlak started with the Association on May 3rd. She



Cindy Chomlak

is originally from St. Paul and just graduated from NAIT's office administration program. She is quickly learning how the Association works and all about the world of land surveying. When you call the Association office, Cindy is likely the one who will answer the phone. She will take your post orders and transfer your phone calls. She is the point of first contact with the Association whether you call or write to us. Cindy, like all administrative staff, will be responsible for several Association committees.

Michelle Woywitka has switched places in the Association's batting order. Michelle used to work at our front desk but, since the annual general meeting, has taken on significant added responsibilities. Michelle will be responsible for the Association's bookkeeping. I found that, with the volume of work here at the Association office, it was no longer feasible to have a contract bookkeeper come into the Association one day per week. Anyone who calls the Association office with a bookkeeping query, will be able to have their questions handled in a more timely

fashion.

Michelle will also be taking on the considerable administrative responsibilities associated with the annual general meeting. Michelle will be taking over from Sharon in that regard and working very closely with the Convention & Social Committee. Michelle had previous experience in the hospitality industry and was an excellent choice to take on this task. Because she enjoys working with people, Michelle will also continue to work with the Public Relations Committee.

Sharon Stecyk says that she wants to cut back her number of hours so she is only in the office four days a week. If you want to speak with Sharon, don't call the office on Fridays. However, you know that Sharon really isn't slowing down. If you have seen the number of project reports we have seen in the office on a regular basis, you will know that there is a great deal of Registration Committee work that will need to continue to be done. Sharon will continue to put together this magazine and provide administrative support for Council and the Section 9 Ad Hoc Committee.

There are a couple of reasons for these changes. One, Sharon will retire one day and it is important that we have staff who can take over when the time comes. Two, the demands on the Association and the staff have grown in recent years as Council establishes ad hoc committees and looks to the future. With the Alberta economy as strong as it is right now, the Association staff has taken on more to ease the burden of our volunteer committees.

Council has set the committees and their terms of reference. ***It's time to play ball!***



letters

Am I Misunderstanding the MSP?

Mr. Pratt: I realize that addressing an e-mail to you is not likely the forum for this concern, but I do feel that this is very important. I have been working within the Alberta land surveying industry now for more than twenty-five years in calculating, drafting and/or checking roles. The Manual of Standard Practice appears to require that subdivision plans prepared for registration contain sufficient dimensional data to be able to traverse, close and calculate the area of each parcel created on that plan. The dimensioning of the lines is ordinarily handled pretty well, but the curves are not handled well in the vast majority of instances.

Often closure has to be “assumed” in order to deduce a parcel area or to deduce a traverse leg, such as to reach another monument location. Obviously, if you begin with having to assume something, actually verifying anything gets rather difficult—not impossible, but difficult.

In some subdivisions, where the property lines are curve onto curve onto curve onto curve, large protracted calculations must be done just to figure out how to traverse across the street to another property corner. I really believe that there needs to be a clearly stated specification that curved property lines must be dimensioned with:

1. delta angle shown for each curve segment;
2. either radial bearings at both ends of every curve segment (not my preference) or chord bearing of every curve segment (my preference); and
3. non-tangential curves should be clearly labelled as such.

If asked about this, most ALSs involved in urban surveys would likely respond by saying that this amount of data would not fit on their plans. Most of those ALSs are likely drafting their plans at 1:1000 scale, so a curve table would be needed. I personally really dislike curve tables. Recently, I have met all of the aforementioned requirements without details or curve tables, by drafting urban residential subdivision plans usually at 1:500 scale.

I can provide you with dozens of samples that are attractive and provide thorough dimensions. I doubt that I am the only person involved that has been troubled by the prevailing standards for dimensioning curves. I think the Manual of Standard Practice actually requires more dimensioning and better dimensioning of curved boundaries, but the prevailing standard falls short of the required standard—or, am I just misunderstanding the requirements.

BRIAN MINTO

Mr. Pratt replied as follows:

Brian: Thank you for your e-mail.

No, I do not think you are misunderstanding the Manual. Part D, Sections 1.4 and 1.5 are the sections you refer to. Section 1.4 requires three elements of the curve be shown. Arc length, radius and central angle (either as an angle [delta angle] or two radial bearings) are required according to the MSP.

I would agree with you that this information can be shown either on the plan, in a detail on the plan or a curve table. I personally like radial bearings for any compound curves, and especially reversing curves as that provides a starting point for computations without computing through several curves to just get

there. Unless noted otherwise, I think you have to assume any new curve is tangential. This, of course, may not be true for found monuments on curves and Part E, Section 3.11 covers this as it requires that the chord or radial bearing should be shown and the radius held.

One conflict that exists that I am aware of is the requirements of SUR-1.20(g) in the Land Titles Office Procedures Manual which states that only the arc length and radius are required. Other elements are optional. In Practice Review, we treat this as the MSP overriding the LTO Manual, as the LTO Manual does say the other elements are optional. The MSP is also only a minimum requirement, and anyone can show more than the minimum requirements.

As to your stated belief that there needs to be a clearly stated specification that a delta angle be shown for each curve segment, I believe that currently exists in the MSP. Your findings are that many do not adhere to this requirements is what I am hearing. However, I agree with you that if a curve is non-tangential, this should very clearly be shown on the plan perhaps by the use of radial bearings.

As Director of Practice Review, I am not involved in the content of the MSP, I merely assess compliance with the requirements it contains for the plans and surveys we examine in the course of Systematic Practice Review. The Standards Committee looks at the MSP and recommends change to the membership and the proposed changes are then voted on at an AGM. Suggestions for change are usually member driven. See Part A of the MSP. Perhaps your letter will provide the impetus for discussion and recommended changes.

LYALL PRATT, ALS
DIRECTOR OF PRACTICE REVIEW



Thank You

Thank you for the kindness Michael and I received in Jasper at your convention. John was a proud member of the Alberta Land Surveyors' Association.

Please extend our thanks to all concerned. Michael and I enjoyed our stay. Our family is honoured to receive the award for John. He would have been greatly touched by this acknowledgement of his service.

DEANNA DEYHOLOS

We would like to thank you so much for hosting us at your Jasper Convention. Your hard work was evident in all the activities and meetings.

Thank you also for the lovely gift bag.

Good luck to the new Executive and Council for 2004-2005.

JIM AND PAM DOBBIN

It was an exciting experience to attend your convention in Jasper. I also extend congratulations to your new FIG Vice President G.K. Allred, I am sure he will represent, not only the Canadian land surveyors, but also those of North America in a perfect manner.

I had the opportunity to visit the offices of land surveyors not only in Alberta but also in Quebec. I realized that even though the language is different, the work of a land surveyor is equal to the rest of Canada.

Again congratulations and thank you.

JOHANN MARTIN LUN
PRESIDENT, TPG

On behalf of the Geomatics Engineering students at the University of Calgary, we would like to sincerely thank you for your attendance at this year's Geomatics Career Day.

The students of the Department truly appreciated the strong turnout of industry at Career Day and, beyond the employment opportunities that were presented, many students benefited from being exposed to the broad range of exciting disciplines

that our field offers. Students were able to make informed career decisions by attending this year's Career Day and the opportunity to make contacts with industry professionals was truly invaluable.

It is great to see a business community that stands behind the Geomatics Engineering Department and its students. Despite the relatively small size of the Department, there are few other university career days that can match the consistent industry support that we see from year to year and, for this, we are grateful. Seeing the many companies at Career Day is validation to students that we are fortunate to be involved in such an exciting industry.

Thank you again for your support and we hope that you will make future Career Days a continued success.

LANA BILY AND RYAN MCKELLAR
GEOMATICS CAREER DAY ORGANIZERS

Rocky Mountain House National Historic Site

The Alberta Land Surveyors' Association understands that Parks Canada is planning on closing the interpretive centre.

The Alberta Land Surveyors' Association would like to encourage Parks Canada to keep the centre open and make the repairs as needed.

David Thompson was a great Canadian surveyor, explorer and adventurer. But, sadly, few people know his name or are aware of his exploits. It is important that we continue to recognize one of our true Canadian heroes and preserve our precious past.

B.E. MUNDAY
ALSA EXECUTIVE DIRECTOR

On behalf of the Parks Canada Agency, I would like to thank you for your interest in the *Proposed Changes to the Services Offered at Rocky Mountain House National Historic Site of Canada*. Parks

Canada is committed to the long term operation of the site. It is a very important part of our national history.

We met with approximately 130 stakeholders from the Rocky Mountain House area between February 10th and 13th, 2004 to discuss the operational challenges that Parks Canada is facing at the site. We brought forward a proposal at the meetings which, we believe, would provide improved services and information to visitors while, at the same time, be financially sustainable over the long term.

We heard from many people over the course of four days and there were a variety of comments/concerns. It is clear that there is strong support for the continued operation of the Visitor Centre.

Parks Canada appreciates your feedback on the proposal and will be encouraging additional comments until March 15th, 2004. Several community groups have expressed their intent to develop partnership options to the proposal. Parks Canada has made a commitment to work with the community beyond the March 15th deadline to explore other options that may be brought forward. Ultimately, it is our goal to ensure that the community's concerns are heard and that this site is protected and presented in a sustainable manner now, and in the future.

The site will continue to operate as it has in the past for the 2004 season. Implementation of any changes will be phased in over the long term.

We greatly appreciate your comments. Your name has been added to a mailing list and we will keep you up to date on the progress of this initiative. I am hopeful that we can find a way to work together to protect and present this very significant national historic site.

ROB HARDING, MANAGER
HERITAGE PROGRAMS, BANFF FIELD UNIT
PARKS CANADA



association notes

Changes to the Register

All West Surveys Ltd. in Edmonton has moved to 17327 - 106A Avenue T5S 1M7. All other contact information remains the same.

All-Can Engineering & Surveys (1976) Ltd. Calgary address has changed to 1944 - 10 Avenue SW. The postal code and other contact information remains the same.

Chris Alcock, ALS is now with Can-Am Geomatics Corp. in Edmonton effective April 5th. E-mail address: chris.alcock@canam.com.

Warren Barlow, ALS is now with Maltais Geomatics in High Level effective June 8th. E-mail: warren@maltaisgeomatics.com.

Bryan Bates, ALS has taken employment with Can-Am Geomatics Corp. in Calgary. E-mail address is bryan.bates@canam.com.

City of Calgary's Engineering Services, Geomatics Division is now known as Land & Mapping, Geomatics Division.

Dennis Clayton, ALS has started up Vista Geomatics Ltd. (see below).

Kent Croucher, ALS is now with Midwest Surveys Inc. in Grande Prairie effective June 30th. E-mail: kentc@midwestsurveys.com.

Ian Emmerson, ALS new e-mail: ian.emmerson@calgary.ca.

Tom Erdman, ALS new e-mail address: tom.erdman@sait.ca.

Bruce Gudim, ALS has moved to the Calgary office of Maltais Geomatics Inc.

Bob Haagsma, ALS new contact information—phone: (403) 845-5974; cell: (403) 844-5359; fax: (403) 845-2974.

John Haggerty, ALS has moved to the Grande Prairie branch office of Can-Am Geomatics Corporation.

Hunter Survey Systems Ltd. has new an alternate telephone number (403) 823-6688 and a new e-mail address: huntersurveys@telus.net.

Brent Irving, ALS new e-mail address: brentirving@all-can.com.

Mark Kocher, ALS direct telephone number is (403) 270-0381.

Martin Newby Consulting Ltd. has moved to 2540 - 5 Avenue NW, Calgary T2N 0T4. Other contact information remains the same.

Midwest Surveys Inc.
• Calgary fax number is (403) 244-2466.

• Grande Prairie office has moved to 11402 - 100 St., T8V 2N5. All other contact information remains the same.

Mark Prevost, ALS is now employed with The Cadastral Group Inc. effective June 1st. E-mail: mark.prevost@cadastralgroup.ca. SAIT's new website: www.sait.ca.

Richard Schlachter, ALS mailing address is Schlachter & Associates Ltd., 2518 Coronation St., Regina, SK S4S 0L1; cell: (403) 540-5878; fax: (306) 525-6865; e-mail: richardschlachter@telus.net.

Stantec Geomatics Ltd. Calgary fax number is (403) 716-8099.

Stewart, Weir & Co. Ltd. in Fort McMurray has moved to Suite 301, 9816 Harding Street T9H 4K3. All other contact information remains the same.

Floyd Strochinski, ALS is now employed with Caltech Surveys Ltd. in Calgary. His direct phone number is (403) 303-4647.

Dennis Tomkinson, ALS is now employed with Stewart, Weir & Co. Ltd. in Edmonton. His e-mail address is d.tomkinson@swg.ca.

Gary Tronnes, ALS new address is 36 Allsop Close, Red Deer T4R 1A3; phone (403) 302-8292.

Vista Geomatics Ltd. is a new surveyor's corporation as of June 11th (P220) under the supervision, direction and control of Dennis Clayton, ALS. Address: 301-14 St. NW, Suite 414, Calgary T4C 1R2.

Peter Walker, ALS is now employed with Universal Surveys Inc. in Calgary.

Fred Welter, ALS (Ret.) address should be 5438 - 11 St. NE, Suite 212; currently listed as 12 St.

Analysis of 2004 ALSA Professional Exams

The Surveying Profession

The Surveying Profession Exam held in April consisted of thirteen questions covering such areas as:

- scope of the surveying profession;
- professional responsibilities of land surveyors;
- interrelationships between members of the land surveying profession and other land related disciplines/professionals;

- current ethical basis of professional practice;
- understanding of the professional liability of survey technology, survey systems, survey organizations, and the survey profession in general;
- affairs of the ALSA as well as current survey technologies.

These areas are listed in the syllabus.

Eleven candidates wrote the exam with seven being successful of obtaining a pass mark of 75% or greater. The questions that seemed to give candidates the most difficulty are listed below.

SCOPE OF THE SURVEYING PROFESSION

1. a) Explain "land surveying" and "practice of surveying" as they

pertain to surveys performed within the Province of Alberta. [asked in 1999, 1998]

Many missed mentioning “cadastrol operations” “information management,” and the “maintenance of the geodetic framework.”

b) *Who can engage in the practice of surveying? Land surveying?*

Many seemed to be unaware that virtually anyone can engage in surveying.

THE MANUAL OF STANDARD PRACTICE

3. The following questions are with respect to the Manual of Standard Practice (MSP) dated April 25, 1996 (including amendments to April 26, 2003):

a) *What is the purpose of the Manual of Standard Practice (MSP)? [asked in 2000, 1999]*

Would like to have seen mention of part of the purpose to be “assisting in the clear and unambiguous definition of boundaries.”

b) *Can a member deviate from the MSP? Explain why or why not. [asked in 2000, 1999]*

c) *Whose responsibility is it to improve the Manual of Standard Practice and keep it current with respect to the existence or absence of a standard?*

4. *What three pieces of legislation authorize an Alberta Land Surveyor the right to enter private property?*

Almost all got the Surveys Act with very few who knew about Surface Rights or Expropriation.

SURVEY TECHNOLOGIES

6. *Your client has demanded that you use Real-Time Kinematic GPS (RTK) only for a legal survey in west central Alberta. Past experience in this specific area of the province, leads you to have the opinion that this is not the “best tool for the job,” in this instance. Present an argument to defend this opinion.*

Along with the obvious terrain and tree-cover limitations that may add to the reasoning of using conventional equipment in this scenario, it was rare

to see any comments regarding a potential increase in cost of performing the survey should the use of GPS be “forced” upon the surveyor. A notable mention goes out to one candidate who said they would “baffle the landowner with the complexities of GPS.”

7. *Briefly define “accuracy” and “precision” and explain the differences between them. [asked in 1999, 1998]*

A surprising number of people had the definitions of these terms reversed.

PROFESSIONAL LIABILITY INSURANCE

8. *Historically, the majority of claims made against Alberta Land Surveyors’ professional liability insurance has been repeatedly within one specific area of practice in surveying. Identify and discuss the nature of this area of practice in surveying that has such a high number of claims. How does this affect the Systematic Practice Review process?*

The majority felt it should be RPRs, but in reality it should be construction layout. Does anyone ever recall SPR looking at survey jobs that do not involve boundary determination?

ALSA

9. *In what year was the Alberta Land Surveyors’ Association founded?*

Some students were correct in saying that history is “rather murky” on this subject as ALSA records show that it was founded around 1910. This means we get to celebrate our 100th anniversary more than once?

10. *Explain what Systematic Practice Review (SPR) is.*

Many implied that SPR was akin to being oppressed by “the Man.” I can see the 70s style poster now showing Lyall Pratt with an afro with the catch phrase, “the Director of SPR is gonna git you, Sucka!” A surprising number viewed the process as being a punitive one as opposed to having education as a primary purpose.

ALSA AFFAIRS

12. *In June of 2001, a Mutual Recognition Agreement (MRA) was created for land surveyors. Briefly explain what this is, what it does, and what parties have endorsed it? [asked in 2002]*

Candidates either knew this or they didn’t.

13. *In the June 2003 issue of ALS News, G. K. Allred, ALS wrote an article called “Dormant Plans - Professional Liability or Financial Liability – or both?”*

a) *What is a dormant plan?*

Yes, there is a time element to the registration of plans! For those of you who might be unaware of this, it is a terrific opportunity to look it up so you know what it is. Unfortunately, it continues to be a compound problem for our profession.

b) *What ramifications do these have on our liability as professional land surveyors? Explain.*

c) *List four specific courses of action that could be undertaken to eliminate the current problem of dormant plans.*

There were many science fiction related theories about what could be done with dormant plans, and even though we were looking for the specific suggestions made in Mr. Allred’s article, consideration and part marks was given to those answers that showed a clear understanding of the issue at hand.

The challenge in setting questions for this exam is in trying to cover the material outlined in the syllabus while using relevant, realistic examples of situations that can be answered in the time allotted. We managed to do this without going so far as beginning questions with the preamble, “you’re out golfing with a client and they ask you...”

The successful candidates showed they have a well-rounded knowledge of the surveying profession and the issues and responsibilities which are part of being a professional land surveyor in Alberta.

Statute Law

The Statute Law exam basically followed the format of past years. All questions, except for one, were directly related to all the legislation that an Alberta Land Surveyor may have to deal with on a daily basis. One question was developed to have the student understand the process of the Land Titles documentation and its effect on the plans that we develop.

In the review of exam answers the following was noted:

- 1) The discipline process within the Land Surveyors Act was very poorly answered. Since it was mentioned in the last analysis in December 2003 it should have been noted that the question would be asked again.
- 2) Again the issue of in-town versus oilfield was evident. A suggestion to all students would be that you confer with fellow articulated students, other land surveyors or develop a study group to grasp acts, regulations and terminology.

Overall the exam results were somewhat lower than the last sitting—15 students attempted the exam. The average mark was 72%.

For those studying for and attempting the exam in the fall 2004 sitting:

- Understand what each broad “part” of the act covers. Then examine the individual sections.
- Discuss the sections (even those that you think you understand) with as many surveyors as possible and with other articulated students.
- Be concise with your answers. Understand exactly what the question asks and answer only that.
- Save time with your answers. Do not rewrite the question as part of your answer.

Practical Surveying

The Registration Committee continued its effort to focus this exam on evidence assessment and minimize the emphasis on computations. Twenty-five candidates attempted the exam and of those, twelve passed for a pass percentage of 48%. The

following is a breakdown of the exam by question.

This is the third sitting of the Practical Surveying Exam under the new format of ten questions each worth ten marks. This breakdown will summarize the questions and detail the performance of the candidates on those questions.

FIELD NOTES AND EVIDENCE ASSESSMENT

1. This question dealt with the interpretation of evidence for various editions of confirmed plans for the same section of a township. The interpretation of original split line field notes formed part of this question.

Calculations were not required.

One candidate passed.

Average mark was 3.8/10.

2. This question dealt with two cases of evidence found around a township section. It questioned the finding and not finding of a wooden post at a NE corner of a section and the determination if it was original or not. How to re-establish its position formed part of this question. Understanding and using Bulletin 38 also formed a part of this question.

Calculations were not required.

Thirteen candidates passed.

Average mark was 7.5/10.

3. This question dealt with the question of surveyor A finding a new pin at the N1/4 of a blind line placed by surveyor B. However, after an exhaustive search, the wooden but of the original wooden post placed by township was found at a different location than the found N1/4 pin. Surveyor A makes some decisions. The candidate is then requested to discuss the errors in judgement of surveyor A on his reassessment of the N1/4 of the blind line.

Calculations were not required.

Nine candidates passed.

Average mark was 6.6/10.

RURAL SUBDIVISION

4. This question asked the candidate to show the evidence to find and place in subdividing an LS out of a

quarter section. Approximate areas of the parcel created were requested.

This question did not involve computations.

Calculations were not required.

Seventeen candidates passed.

Average mark was 8.2/10.

5. This question dealt with subdividing out two lots. One lot had to be subdivided into an exact area with the other being the remainder.

Calculations were required.

Seventeen candidates passed.

Average mark was 7.1/10.

LEGAL SUBDIVISION IN SURVEYED TERRITORY

6. This question dealt the evidence needed to find or re-establish when subdividing a fractional LS out of a section. Understanding that the two LSs in the last quarter section before the meridian are not equal splits was important in this question. An understanding of how to re-establish township fabric using township plans and The Manual of Instruction for Canada Lands (Blue Book) was needed to be successful in this question.

Calculations were not required.

Eleven candidates passed.

Average mark was 6.7/10.

CALCULATIONS IN UNSURVEYED TERRITORY

7. This question dealt with calculating the total coordinates of a W/S. Understanding how to extract information from the “Blue Book” was crucial for this question in both solving for total coordinates and extracting section dimensions. Knowing what type of coordinates may appear on a W/S plan in unsurveyed territory was important to this question.

Minimal calculations were required.

Eighteen candidates passed.

Average mark was 7.8/10.

INTEGRATED SURVEYS

8. This question dealt with integrating a survey into ASCMs. A survey started from two ASCMs and ended

on two other ASCMs. The traverse measured three distances and four angles to link the four ASCMs and two traverse points together. An understanding of calculating and understanding the allowable misclosures was needed to do this question.

Minimal calculations were required.

*Eighteen candidates passed.
Average mark was 7.9/10.*

URBAN SUBDIVISION

9. This question dealt with the subdivision of an urban lot into two parcels. Evidence dating back to pre-1912 where wooden posts marked lot corners was involved and formed part of this question. Understanding the product that goes to Land Titles for registration was asked as part of this question.

Minimal calculations were required.

*Nineteen candidates passed.
Average mark was 8.3/10.*

URBAN RPR

10. This question involved an understanding of proportioning and re-establishing positions for an RPR. Knowing the minimal information that is required to shown on an RPR was needed to be successful with this question.

Calculations were required.

*Two candidates passed.
Average mark was 3.7/10.*

In summary, question one, evidence assessment and question ten, involving calculations of an RPR, appear to be areas where the candidates were weak. When the new format was introduced three sittings ago, it was generally evidence assessment that was weakest but the answers to evidence questions, overall, have improved. The Registration Committee intends on maintaining the existing format for the fall sitting of the Practical Surveying Examination.

Ken Allred Elected Vice President of FIG

Ken Allred, a recent past president of the Alberta Land Surveyors' Association, was elected as one of four vice presidents of the International Federation of Surveyors (FIG) at the FIG Working Week held in Athens, Greece from May 23-27. Ken will serve a four-year term on the seven-member Council of Governance of the international surveying organization which is headquartered in Copenhagen, Denmark. Stig Enemark, a survey professor from Aalborg University in Denmark was also elected for a similar term of office.

Ken has been an active participant in FIG conferences since 1977 and served as chair of Commission 1 - Professional Practice from 1994 - 1998. He has represented the Canadian Institute of Geomatics which is the member association of FIG as the head of the Canadian delegation for several years. He has also been active in surveying circles in Canada serving as President of the Canadian Council of Land Surveyors in 1984-1985 and as President of the Alberta Land Surveyors' Association in 2001-2002.

The theme of the FIG Working Week in Athens was the Olympic Spirit in Surveying. Delegates from approximately sixty countries were in attendance at the conference. Three days of technical papers were presented including a paper entitled "Practice Review - The Professional Coach" which was prepared by Ken Allred and Lyall Pratt, Director of Practice Review for the Alberta Land Surveyors' Association. The paper is available at www.fig.net/pub/athens/papers/ts08/ts08_allred_pratt.pdf.

The International Federation of Surveyors is officially recognized by the United Nations as a non-governmental organization (NGO) and is active in working with the United Nations Environmental Programme, Habitat, the Food and Agriculture Organization and the World Bank. FIG is currently working with the Government of Canada in organizing a "special forum for the development

of land information policies in the Americas" to be held in Mexico in October.

FIG activities centre around an annual working week as well as a regional conference in various locations around the globe. It also holds a quadrennial Congress which will be held in Munich, Germany in September 2006. The next regional conference will be held in Jakarta, Indonesia from October 3-7, 2005. All activities feature a large number of technical papers dealing with issues ranging from land reform to survey instrumentation and professional practice.



FIG Article of the Month

Each month, the FIG website publishes a paper called the *Article of the Month*. These are high-level papers focusing on interesting topics to all surveyors. It can be picked up from a FIG conference or another event.

The article of the month in May was written by Dr.-Ing. Ralf Schroth, Vice President of FIG from Germany. His paper, "Direct Geo-Referencing in Practical Applications," gives an overview to modern technologies in GPS/INS for direct geo-referencing from the application point of view. It also describes the integration of these new technologies into mapping market and for other use of surveyors. Empirical results from more than thirty projects are discussed.

This paper was presented for the first time at the ISPRS workshop about theory, technology and realities of inertial/GPS sensor orientation in Castelldefels/Barcelona, Spain, in September 2004. It has been partly revised for the FIG article of the month at www.fig.net/pub/monthly_articles/may_2004/schroth_may_2004.htm.



709
M.A. (Mark)
Sutter



710
T.S. (Timothy)
Steeves



711
H.L. (Heather)
Stairs



712
P. (Piotr)
Strozyk



713
C.R. (Christy)
Thompson



714
S.R. (Steven)
Keddy



715
J.E. (John)
Landry

New Members

#709 SUTTER, Mark A.

Mark Albert Louis Sutter was born in Toronto on March 27, 1968. He graduated from Grey Highlands Secondary School and went on to receive a B.Sc. Survey Specialist from the University of Toronto.

The topic of the technical report submitted as part of the qualifying examination was "Employee Training and Development." Articles were served under Jim MacLeod, ALS from December 9, 1996 until he received his commission on March 9, 2004.

Mark served as a member of the ALSA Convention & Social Committee.

Surveying experience includes a summer position in Ontario during university years; two years in Whistler, B.C. with R.B. Brown Associates and the last nine years with Crape Geomatics in Calgary.

Mark is married to Bonnie and enjoys skiing, biking and hiking.

#710 STEEVES, Timothy S.

Timothy Scott Steeves was born in New Brunswick in 1967. He graduated from Caledonia Regional High in Hillsborough, New Brunswick in 1985. He graduated from the New Brunswick Community College with a Civil Technology Diploma in 1988 and went on to receive a B.Sc. Geomatics Engineering in 1993 from the University of New Brunswick.

Articles were served under Ross Woolgar, ALS from June 1999 to March 2004. Commission as an Alberta Land Surveyor was received on March 12, 2004. Tim also received his designation as a professional engineer in 1999.

During his employment with Challenger Geomatics from 1994 to present, Tim has been involved in oil and gas and municipal surveys as well as spending two years overseas in the Malaysia Joint Venture Office.

Tim is married to Mary and enjoys golf, hockey and skiing.

#711 STAIRS, Heather L.

Heather Lynn Stairs was born in Fredericton, New Brunswick on January 7, 1976. She graduated from Fredericton High in 1994 and received a B.Sc. in Engineering (Geodesy & Geomatics) from the University of New Brunswick in 2000.

Articles were served under Ron Hall, ALS, Dwight Wiberg, ALS and John Stephens, ALS from September 2000 until receiving her commission on March 12, 2004.

Heather has been employed with Focus Surveys Inc. since 2000 and works in both the municipal and oil and gas industry.

Heather and her partner, Jason Roberts, reside in Grande Prairie.

#712 STROZYK, Piotr

Piotr Strozyk was born in Poland on February 17, 1962 and entered Canada on September 25, 1989. He

graduated from Walbrzych High School in Poland in 1981 and went on to receive a Masters in Survey Engineering from the Agricultural University of Wroclaw of Poland in 1988.

D. Rae Sutherland, ALS served as Piotr's principal from July 2000 until he received his commission on March 16, 2004.

Piotr has served on the ALSA Professional Development and Standards committees and the Public Land Dispositions Subcommittee.

Employment has been with Pals Surveys Ltd., Can-Am Surveys and Canadian Engineering & Surveys Inc. Surveying experience includes subdivision, condominium, municipal construction surveys and real property reports.

Hiking, skiing, tennis, soccer, jazz music, arts and jogging are just a few of Piotr's passions.

Piotr is married to Malgorzata and they have two children, Tobiasz, age 10, and Gniewko, age 6.

#713 THOMPSON, Christy R.

Christy Richard Thompson was born in Saint John, New Brunswick on February 13, 1954. He graduated from Saint John High in 1973 and from the University of New Brunswick with a B.Sc. in Surveying Engineering in 1978.

Articles were served under Tim Harding, ALS from December 2000 until he received his commission on March 18, 2004.



716
D. (Doug)
Sharp



717
F. (Francois)
Dion



718
I.J. (Ian)
Westlake



719
D.E. (David)
Gosling



720
M.D. (Martin)
Robinson



721
L.A. (Lee)
Andersen



722
A.F. (Andrew)
Miles

Christy has resided in Edmonton and worked in the surveying industry since 1978. He also spent twelve years supporting oil and gas exploitation in the Beaufort Sea.

Passions include hunting, fishing, racquet ball and judo.

Christy is married to Donna and they have two sons, Tugger and Jarett.

#714 KEDDY, Steven R.

Steven Richard Keddy was born in Middleton, Nova Scotia in 1963. He graduated from Middleton Regional High School in 1981, from COGS in 1983 and from the University of New Brunswick in 1988 with a B.Sc. (Eng.)

Ron Hall, ALS served as Steven's principal from 1998 until he received his commission on March 19, 2004. "Survey for Administrative Plan Showing Projected Township Subdivision for Halfway River Indian Reserve" was the topic of the technical report submitted as part of the qualifying examination. Steven also holds designations as a CLS, BCLS, NSLS and a P.Eng.

Surveying experience includes rural cadastral surveying in Nova Scotia and oilfield surveying in northeastern BC and Alberta.

Steven enjoys snowmobiling and quadding with his family and resides in Grande Prairie with his wife, Bev, and three children, Alex, Matt and Emma.

#715 LANDRY, John E.

John Ernest Landry was born in Ontario on February 4, 1950. He graduated from St. Joseph's College in Yorkton, Saskatchewan in 1969 and received a diploma from the Ryerson Polytechnical Institute in 1972.

Stan Longson, ALS and Craig McBride, ALS served as John's principals from 1998 to 2002. He became an affiliate member in 2002 until he received his commission on April 12, 2004. John also received his CLS commission in 1982.

John has been involved with the ALSA Standards Committee since 2000 and is a member of the Knights of Columbus (3rd Degree).

Urban subdivision surveys, rural wellsite surveying in surveyed and unsurveyed territory and pipelines in surveyed and unsurveyed territory are the areas that John has been involved with.

John enjoys mechanics, camping, and lake lot renovations. He is married to Evelyn and they have three sons, Mathieu, Jon-Paul and Michael.

#716 SHARP, Doug

Doug Sharp was born in Edmonton, Alberta on November 17, 1972. He graduated from Spruce Grove Composite High School and 1990 and received a B.Sc.E. (Geomatics) from the University of Calgary in 2001.

Articles were served under Daniel Lachance, ALS from May 2001 until he received his commission on April 13, 2004.

Doug was employed with All-West Surveys from 2001 until May 2004 and is presently employed with Maltais Geomatics Inc. in Calgary.

Doug enjoys, hockey, boxing and golf and is married to Diane.

#717 DION, Francois

Francois Dion was born in Chacoutimi, Quebec on December 24, 1973. He graduated from Ecole Secondaire Antoine-Brossard in 1991, from College Edouard-Montpetit in 1993 and went on to receive a B.Sc. in Geomatics Sciences from Laval University in Quebec.

Articles were served under Dennis Clayton, ALS (April 2000 to June 2002) and Paul Dixon, ALS from April 2002 until he received his commission on April 15, 2004.

Francois has been on the ALSA Standards Committee since 2001 and he is also president of the Laval University Alumni in Calgary.

Francois has worked for a number of surveying firms in Alberta in municipal and oilfield surveying.

Hockey, road cycling, mountain biking, skiing, snowboarding reading and golf are a few of Francois' favourite pastimes. Francois and his partner, Marie-Claude Levesque, reside in Calgary where he is presently employed with Stewart, Weir and Co. Ltd.

#718 WESTLAKE, Ian J.

Ian was born in London, England on November 18, 1966 and entered Canada in 1967. He graduated Sir Winston Churchill High School in Calgary and went on to receive a B.Sc. in Surveying Engineering from the University of Calgary in 1992.

Articles were served under Stephen Fediow, ALS from November 1997 to September 2002 and Ian Emmerson, ALS from September 2002 until he received his commission on April 16, 2004.

Ian also holds a P.Eng. designation and has participated on the ALSA Standards Committee since 2002.

Surveying experience includes lidar mapping, survey control, parcel mapping, construction and urban land surveying. Ian is presently employed by the City of Calgary.

Ian enjoys biking, skiing and home improvement projects. He is married to Jade and they have two children, Dylan (2 years) and Lauren (2 months).

#719 GOSLING, David E.

David Eric Gosling was born on January 6, 1975 in Abbotsford, BC. He graduated from Bowness High School in 1992, from SAIT in 1997 with a Survey Technology Diploma and from the University of Calgary with a B.Sc.

Articles were served under Tom Medicott, ALS from September 2001 until he received his commission on May 31, 2004. David is also an Engineering in Training with APEGGA.

Surveying experience includes summer employment with Global Surveys Corp. from 1996 to 1999 and employment with D.A. Watt Consulting Group from June 2001 to the present time.

Other activities include fishing, camping, snowboarding and golfing.

David is married to Sheena and they reside in Calgary with their two children, Mackenzie (2 1/2 years) and Mason (10 months).

#720 ROBINSON, Martin D.

Martin Dale Robinson was born in Red Deer, Alberta on October 19, 1973. He attended Lindsay Thurber Composite High School and went on to graduate from the University of Calgary with a B.Sc. in Geomatics Engineering in 1996.

Surveying experience includes working for one year with Usher Canada in Cold Lake, Alberta and for the past six years with Snell & Oslund Surveys in Red Deer.

Martin is married to Lisa Apperley.

#721 ANDERSEN, Lee A.

Lee Anders Andersen was born in Meadow Lake, Saskatchewan on February 22, 1974. He graduated from Carpenter High School in Meadow Lake in 1992 and went on to receive a B.Sc. in Engineering from the University of Calgary in 1997.

Vince Voss, ALS served as Lee's principal from January 2001 until he received his commission on June 7, 2004.

Lee also holds designation as a P.Eng. and an SLS.

Lee enjoys hockey, hunting and fishing. He is current employed with Interprovincial Surveys Ltd.

Lee resides in Lloydminster, AB with his wife Candice and daughter, Venna (1 1/2 years).

#722 MILES, Andrew F.

Andrew Miles Frederick was born in Sudbury, Ontario in 1954. He graduated from St. Charles College in Sudbury and went on to receive a Bachelor of Environmental Studies from the University of Waterloo in Ontario in 1976 and a B.Sc. from the University of Alberta in 1988.

Andrew received his CLS commission in 1991 which allowed him to become an affiliate member of the Alberta Land Surveyors' Association on October 3, 2001 until he received his commission on June 21, 2004.

Andrew is currently a member of the ALSA Professional Development Committee.

His twenty-one years in the survey industry includes eighteen years in the Yukon and Northwest Territories and the past three years employed by Stewart, Weir & Co. of Edmonton.

Andrew enjoys golf, coaching soccer, skiing and travelling. He is married to Glenda and they have three children, Warren, Nathan and Kaelan.

Manual of Instructions for the Survey of Canada Lands

The on-line edition of the *Manual of Instructions of the Survey of Canada Lands* is available. This e-edition incorporates all amendments to the third edition. Please visit www.lsd.nrcan.gc.ca which features:

- The e-edition containing a compendium of all current general instructions and will officially replace the *Manual of Instructions for the Survey of Canada Lands—third edition* on April 1, 2004;
- An historical section that provides access to instruction of the Surveyor General as published in previous editions of all Manual of Instructions;
- Part A of the third edition is replaced by links to federal and territorial legislation websites thus providing access to legislation maintained current by the legislative authorities.

The e-edition is a dynamic and flexible tool providing timelier access to current and historical information. All editions published since 1871 are available on-line to view or download, free of charge.

We encourage you to access the general instructions of the Surveyor General of Canada Lands through this site. Hard copies of Parts C, D and E, as published on the Web, will be available on a print-on-demand and cost recovery basis. Parts A and B are no longer maintained in hard copy format by the Legal Surveys Division.

JOHN GAGNON, P.ENG., NBSL, CLS
HEAD, REGULATION, LEGAL SURVEYS DIVISION
GEOMATICS CANADA, NRCAN

Scaling the Heights *by John Holmlund, ALS*



John Holmlund and Guy Anderson

Kilimanjaro, the highest mountain in Africa and the highest free-standing mountain in the world. Why would a 55 year-old man who has never before climbed a mountain decide this is the mountain for him? Is there something special or magical about Kili? Is the urge to climb into rarified air simply a midlife crisis somewhat akin to owning a red sports car? Why did I get the urge to do this when millions of other people could care less about climbing a mountain? I never found the answer to any of these questions at the top of the mountain, but I do know it was one of the most incredible experiences of my life.

Climbing into altitude is an experience one can only understand by actually being there and doing it. It is important to be well prepared physically and mentally. It is also important to listen to your body, get acclimatized on the ascent and ensure you do not push beyond your limits.

Guy Anderson and I landed at Kilimanjaro airport late on the evening of the January 6th. As luck would have it, one of my bags did not arrive with our flight. I reported the bag missing but was not very confident that it would show up before we began the climb. We arrived at the hotel about 10:00 p.m. and were welcomed by the staff who had kept the dining room open to serve us a late supper. The food was fine, the accommodations were okay and we both had a good rest. We spent January 7th doing a walking tour of Moshi, meeting our guide and prepar-

ing our bags for the climb. I had prepared myself to go to the mountain minus a number of items that were in my lost luggage. I had most of the real essentials and had convinced myself that even missing a few items, like underwear and socks, I would be just fine.



Jungle

The morning of the 8th came under heavy skies, no rain yet, and great anticipation of what lay ahead. With luck on my side, the missing bag arrived at the hotel an hour before we left for the mountain. I quickly repacked my gear and suddenly realized my lone excuse for not making the summit, not having all my equipment, had just vanished. Nervously we climbed into the old Toyota Landcruiser bound for Kilimanjaro with the guides, porters and all of our gear. Arriving at the park gates (elevation—1,800 metres) around 10:00 a.m., we registered and waited for the guides to organize the porters. We finally started our long-awaited hike at about 11:00 a.m. The rain started as a light mist and gradually increased throughout the day. The first kilometre was along an old road

winding gently up hill through the rain forest. Our packs felt light, we were full of energy and spirits were high. From the end of the road, we hiked the rest of the day on a new graded trail about 1.5 metres wide. The trail, continuing through the rain forest, was a constant uphill grind and, in some areas, got quite steep. We arrived at camp (elevation—3,000 metres), in the rain, at 4:30 p.m. The camp was located in a rolling, muddy, bushy area and appeared quite unwelcoming. The camp was shared with another 100 to 150 hikers, guides and porters who were moving up the mountain along with us. After having consumed our first mountain food at supper, we realized this was going to be a weight-losing experience.



Dinnertime

The morning of the 9th came under bright blue skies. We got our first real look at the top of Kilimanjaro. The summit seemed a million miles away as it glistened in the bright morning sun. After breakfast, we packed our

gear and by 7:30 a.m. were the first hikers on the trail. The nicely graded trail through the rain forest had now turned into a more demanding mountain trail. We scaled rocks, wallowed through mud and scrambled over boulders. Now we were really on the mountain. Within an hour, other hikers and porters were catching up to our group and the bright sun had turned to clouds, then to mist and finally to rain. The balance of the day was spent hiking in the mist and rain. The terrain had changed from rain forest to sparser and shorter vegetation. We saw lobelia and giant groundsels for the first time. We hiked through an area covered with strange vegetation, making me think we were characters in a fairytale. The experience was incredible. We hiked up to 4,100 metres and then descended to 3,900 metres to camp. We reached camp at 4:30 p.m., in the rain. Again, the camp was an uninviting mud hole. All our gear was wet. The inside of my tent was as wet as the outside. I managed to wipe it out and cover the floor with plastic bags in an effort to keep my sleeping bag dry. Needless to say, it was not the most comfortable night.



Fantasyland

The morning of the 10th was, again, bright and sunny. We were now above the tree line and the topography reminded me of the desert in Arizona. Finally, the rain was behind us as we traversed around the mountain for the next three days. In an effort to acclimatize our bodies, hiking high and sleeping low was the order of the day. Each day we would hike up to 4,300-4,500 metres and descend to camp at

approximately 4,000 metres. We followed a well-worn trail that twisted and turned its way through the valleys and cutting down the slopes of the mountain. We reached our last camp on the ascent (base camp—4,600 metres) at noon on the 12th. I took advantage of the sunny, warm afternoon by spreading my gear out on the rocks to dry.



This looks like a good spot?

It was now time to prepare for the summit. As we were planning to leave at midnight for the summit, we had to prepare our packs, get some rest and nourish our bodies. At 11:15 p.m., the guides rattled our tents to get us awake and out for a cup of tea. With the use of my headlamp, I organized myself in the semi-darkness of my tent. As I pulled on my boots I realized this is what I had come to Kilimanjaro for—to challenge myself “to reach the summit.”

We left camp at midnight, along with a number of other hikers, in our own personal quest to make the summit. It was a given not everyone would be successful. It was a beautiful night. The moon and stars were bright. The lights of the villages on the plains below sparkled like Christmas lights as the glacier at the top of Kilimanjaro reflected the moon’s brilliance in the purest white that I could ever imagine. Kilimanjaro, on this night, was truly a very magical place to be. As we climbed through the night and our breath became short and more laboured from the high altitude, I seem to draw energy from the sheer sense of the

visual experience. It was breathtaking in *every* sense of the words.

The climb through the night was steep and very demanding! We reached Stella Point (elevation—5,700 metres) at the rim of the crater at 5:45 a.m. I felt pretty well, all things considered, but Guy was showing some signs of acute mountain sickness. At this point, he was emotionally and physically spent but recovered sufficiently in fifteen minutes to continue on. As we hiked to the summit, about another kilometre, I hit the wall. It was as if some invisible force had suddenly sucked all the energy out of my body. It took me almost an hour to walk the one kilometre to the summit. As I approached the summit, I was resting every 20 or 30 metres and moving at a snail’s pace. It seemed like I would never get there. Then suddenly I was there (6:45 a.m. elevation—5,895 metres) the “**roof of africa.**” I touched the sign, fell to my knees and the first thought to cross my mind was, “how will I ever get off this mountain?”



We made it to the “Roof of Africa!”

Climbing Kilimanjaro was not a life-altering experience but it certainly made one point crystal clear to me. If you work hard with dogged determination even what seems to be an impossible goal can be achieved.



book review

by Ken Allred, ALS

Measuring America *How an Untamed Wilderness Shaped the United States and Fulfilled the Promise of Democracy*

by Andro Linklater

What began on the banks of the Ohio River on September 30, 1785, was not just a survey. It was where the most potent idea in economic history—was first released into the western wilderness.

ANDRO LINKLATER

Measuring America is a very interesting book which the author states was sparked by his interest as a layman in triangulation. I suspect, however, the author, who is a historian and full-time writer-journalist, also had a hidden fantasy with the metric system and its development.

Thomas Jefferson, the third president of the United States was fascinated with decimalization. He was the prime proponent of the adoption of the dollar and a decimal system of coinage. He was similarly fascinated with the metric system as a means of simplifying and standardizing the

mumble jumble of American weights and measures. In this vein, he attempted to establish a system of survey based on a ten-mile square township divided into a hundred one-mile square sections. Jefferson, however, was appointed envoy to France and his scheme was thus side-tracked in favour of the familiar six-mile square townships that are common throughout both the United States and Canada today.

The book is a real ego booster for surveyors due to the author's description of the favoured position of our predecessors in early days. George Washington as a young 17 year old surveyor earned nearly as much as he did in later years as the first President of the United States. Surveys were very important in the settlement of the west and surveyors were highly respected in the community. Thomas Jefferson was a visionary when it came to land, thinking about land in a way that no speculator would. He understood the value of land particularly to a developing nation. Similarly he held people who worked the land in high regard stating, "those who labour in the earth are the chosen people of God."

The author describes the importance of the Gunter's chain to the

development of a simple "organic" system of measurement. The Gunter's chain was a unit of human measure being 22 yards or paces or the length of 66 human feet. The chain, the rod, the acre, the quarter section, all melded so well into a simple system of land measure based on the square and the number four.

Throughout the approximately 300 pages of the book, the reader is taken from the invention of landed property to the importance of geometry to the history of measurement; to France, England, the West Indies, and even to Canada; in a fascinating tale about the development and laying out of the American rectangular system of survey. The author talks about Daniel Boone as a brave scout but incompetent surveyor. In contrast, he speaks of the professionalism of William Burt, inventor of the solar compass, and of the trials and tribulations of surveyors wading through marsh for days on end.

A great book that should be of interest to all surveyors and other persons interested in land and settlement geography.

Measuring America is available in the ALSA library and is filed as number H0769.

Awards Lunch



(above from left to right)
25 Year Pin Recipients
L.A. (Lloyd) Cridland
D.J. (Don) MacNeil
P.A. (Peter) Walker



(bottom left to right)
Honorary Life Membership
R.A. (Dick) Bassil
Professional Recognition Award
J. (John) Deyholos (son Michael and wife Deanna received the award for John)
President's Award
Ernie Isley





spr director's message

by Lyall Pratt, ALS

Phase 2 Practice Ratings Year Five Statistics

In June 2000, we started reporting on the Practice Ratings for Phase 2 of Systematic Practice Review.

Since we have now completed all except a few follow-up reviews in Phase 2 and are into Phase 3 of Systematic Practice Review, this will be the final report on Phase 2 statistics.

The Phase 2 framework document says under section 1.6: *“Statistical data from practice reviews will be collected and reported in a format similar to the benchmark data in Phase 1.”* Under section 4.4 the Phase 2 framework document also says: *The Practice Review Board shall report annually to the membership on trends in practice performance as identified by the statistical data collected during Phase 2.”* The same sections in the Phase 3 framework document request similar collecting and reporting, so the June 2005 column will contain the first statistical reporting for Phase 3.

Since this is the final reporting period for Phase 2 data, I thought I would reprint all five years of statistics and graph the changes in practice ratings.

It should be noted that the June 1, 2000 reporting period was for a one-year period and included all the products examined in Phase 2 up to the date of the article. The June 1, 2001 reporting period included all products examined over the two-year period (2000 & 2001). So each reporting period covered all of the products examined in Phase 2 to the date of the article. So the June 1, 2004 reporting period covers almost all of the products examined in Phase 2.

As Reported June 1, 2000

Categories	Plans			Field Notes			Field Inspections		
	Avg. (%)	High (%)	Low (%)	Avg. (%)	High (%)	Low (%)	Avg. (%)	High (%)	Low (%)
Subdivisions	89.47	96.47	77.55	68.13	86.36	17.36	78.96	98.68	60.00
Rights-of-Way	94.90	98.29	89.78	80.59	89.83	69.25	82.53	97.54	66.94
Wellsites	84.54	92.76	79.32	80.43	97.11	70.44	85.02	97.62	64.86
RPRs	83.83	94.06	69.41	65.19	84.19	39.45	62.93	85.59	36.12
Road Surveys	86.82	92.92	73.82	80.16	84.48	74.70	79.44	96.04	54.43
Other	95.20			70.38			89.55		
All Categories	87.58	98.29	69.41	72.89	97.11	17.36	75.16	98.68	36.12
Practice Ratings									
Avg. High Low									
(%)(%)(%)									
79.89									

As Reported June 1, 2001

Categories	Plans			Field Notes			Field Inspections		
	Avg. (%)	High (%)	Low (%)	Avg. (%)	High (%)	Low (%)	Avg. (%)	High (%)	Low (%)
Subdivisions	90.40	98.72	72.65	68.87	94.88	17.36	79.82	100.00	40.46
Rights-of-Way	92.87	98.33	82.02	77.23	90.39	57.96	87.42	98.98	60.78
Wellsites	87.60	97.59	75.86	75.05	97.11	40.79	81.36	97.62	48.10
RPRs	86.86	96.30	69.41	71.01	92.56	39.45	68.82	91.93	36.12
Road Surveys	89.33	98.75	73.82	75.22	84.63	51.71	76.43	97.37	35.69
Other	92.90	98.02	83.95	75.49	81.78	66.50	89.89	93.88	86.25
All Categories	89.26	98.75	69.41	73.08	97.11	17.36	77.98	100.00	35.69
Practice Ratings									
Avg. High Low									
(%)(%)(%)									
80.50 93.04 59.76									

As Reported June 1, 2002

Categories	Plans			Field Notes			Field Inspections		
	Avg. (%)	High (%)	Low (%)	Avg. (%)	High (%)	Low (%)	Avg. (%)	High (%)	Low (%)
Subdivisions	90.99	99.17	72.65	70.05	94.88	17.36	82.76	100.00	40.46
Rights-of-Way	93.32	98.35	82.02	77.91	92.48	57.96	87.15	99.57	60.78
Wellsites	88.60	97.59	75.86	75.29	97.11	34.30	83.13	97.62	48.10
RPRs	86.35	96.30	50.91	71.56	92.56	39.45	70.61	98.99	16.09
Road Surveys	89.09	98.75	73.82	75.29	88.68	51.71	75.41	97.46	35.69
Other	94.77	98.02	83.95	71.39	85.81	49.93	87.55	98.17	68.85
All Categories	89.54	99.17	50.91	73.30	97.11	17.36	78.87	100.00	16.09
Practice Ratings									
Avg. High Low									
(%)(%)(%)									
82.61 94.31 57.16									

As Reported June 1, 2003

Categories	Plans			Field Notes			Field Inspections		
	Avg. (%)	High (%)	Low (%)	Avg. (%)	High (%)	Low (%)	Avg. (%)	High (%)	Low (%)
Subdivisions	89.98	99.17	72.65	71.24	97.77	17.36	83.94	100.00	40.46
Rights-of-Way	92.09	98.35	71.19	77.00	92.48	45.97	84.94	99.57	52.65
Wellsites	88.41	97.59	75.86	74.85	97.11	34.30	82.64	97.92	45.76
RPRs	86.47	96.91	50.91	72.17	92.56	39.45	72.47	99.32	16.09
Road Surveys	88.80	98.75	73.82	75.89	88.68	51.71	79.03	98.61	35.69
Other	94.09	98.02	83.95	72.81	85.81	49.93	85.67	98.17	62.33
All Categories	89.05	99.17	50.91	73.56	97.77	17.36	79.54	100.00	16.09

Practice Ratings

Avg. (%)	High (%)	Low (%)
83.07	94.31	57.16

As Reported June 1, 2004

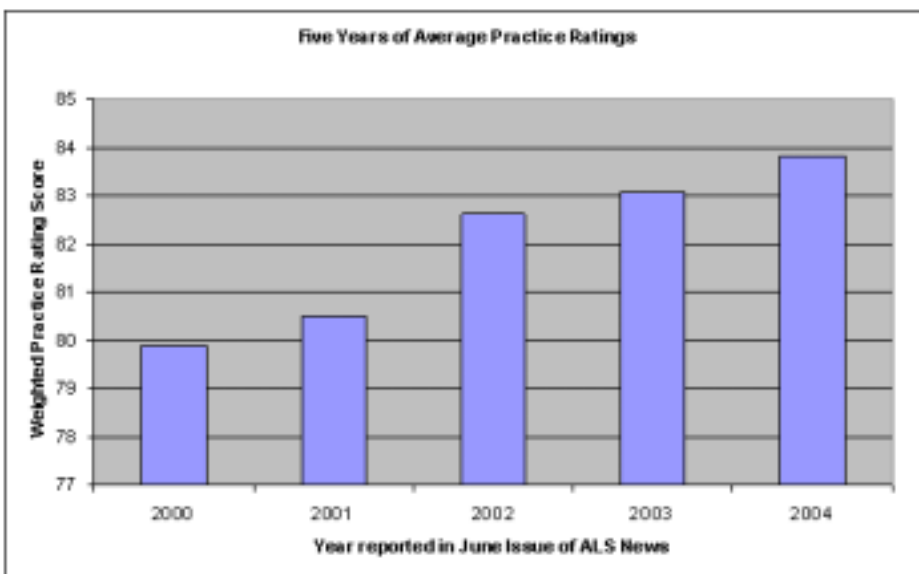
Categories	Plans			Field Notes			Field Inspections		
	Avg. (%)	High (%)	Low (%)	Avg. (%)	High (%)	Low (%)	Avg. (%)	High (%)	Low (%)
Subdivisions	89.24	99.17	72.65	72.28	97.77	17.36	84.66	100.00	40.46
Rights-of-Way	91.66	98.35	71.19	77.82	92.48	45.97	85.74	99.57	52.65
Wellsites	87.53	97.59	69.23	75.00	97.11	34.30	84.00	98.59	45.76
RPRs	86.13	96.91	50.91	72.74	94.19	39.45	74.77	99.32	16.09
Road Surveys	88.73	98.75	73.82	76.03	88.68	51.71	80.02	98.61	35.69
Other	91.93	98.02	77.05	73.24	93.22	49.93	86.80	98.17	62.33
All Categories	88.46	99.17	50.91	74.01	97.77	17.36	80.92	100.00	16.09

Practice Ratings

Avg. (%)	High (%)	Low (%)
83.81	95.09	57.16

Over the course of Phase 2 we have seen gradual score changes in many of the categories and product types sometimes with new high or even new low scores appearing. While the lowest practice rating (57.16%) was first reported in the

2002 statistics, the highest (95.09%) is reported in this year's statistics. Over the course of five years, the average weighted practice rating has consistently improved as shown in the data reports and the practice ratings graph. This trend I believe is



proof that the quality control processes used by practitioners are having a positive effect on the end products. It would be presumptuous to suggest that Practice Review alone is responsible for this continual improvement but I am sure it played a part. I am, however, certain that the Getting it Right seminars, which are incredibly well attended and are participatory by all attendees have helped make a difference over the last few years.

The graph shows the five year trend in practice rating scores.

Random Thoughts

Response Timelines

I have noticed that many practitioners seem to think that they need to have all issues raised in a practice review report fully resolved before responding to the report. This is not at all the case. If, as a result of a practice review, additional field work, or plan corrections are needed, the response only needs to indicate what you propose to do and when you intend to do it.

As noted in the Phase 2 framework document under Section 3.1 "*Practitioners shall respond in writing within six weeks of receiving an SPR report.*" The same section of the Phase 3 framework document contains the same statement with an added sentence that says: "*The response period may be increased at the discretion of the Practice Review Board.*" Nowhere in either framework document does it say or suggest that all issues must be fully resolved before responding to the report.

When a report is first sent out the initial deadline for a response is set at six weeks (as per the framework document) or more if a holiday falls within the six-week period. The Practice Review Board has now given me the ability to extend that deadline for another six weeks maximum if the practitioner requires more time to respond. I will need to know what if anything has been done to date on the response and the reason for an exten-

sion. If the initial time and the maximum extension are both used, I cannot further extend the response time. If there is then no request in writing directly to the Board for additional time, the file is considered delinquent at the first Board meeting following the passing of the last deadline. The Board can and does consider all requests for deadline extensions on an individual basis. If there is a good reason why you are unable to meet the timelines for a response to a report, please let the Board know in writing what the reason is, before the deadlines expire and the report is deemed delinquent. Any request to the Board for a deadline extension should also include your own self-imposed deadline for a response to the report, the reason why you were unable to meet the initial deadlines, as well as the current status of your response (e.g. have you read the report yet, have you started your response and, if so, what stage are you at).

Field Staff Seminars

Over the last several years, I have conducted field staff seminars about five times a year. Most often, these requests come in the spring and early summer. So far in 2004 we have conducted four with one more currently scheduled. Not all survey practices requesting a field staff seminar practice in the same area, so I have developed a generic municipal practice seminar and a generic oil & gas practice seminar. Some members also request specific points they would like me to address during the seminar and they are added on an individual basis.

I suspect there are some that have no idea what a field staff seminar is. Field staff seminars were actually started early in Phase 1 of practice review but then suspended until 1999. They were reinstated as part of the educational thrust of Phase 2 and the direction that SPR staff dedicate up to 1/3 of their time to educational initiatives. In the June 1999 issue of *ALS News* (page 23), I outlined what

a field staff seminar consists of by saying: *“These seminars are essentially an abbreviated version of the field portion of Getting it Right. We spend from one to two hours talking about field issues such as evidence, survey methods, field notes, and answering questions. The seminar is not designed to instruct field staff, as that is the responsibility of the individual land surveyor. It should, however, reinforce the importance of getting it right in the field. If you are interested in one of these seminars, please contact me. We need a mutually agreeable time and date, a venue and a large enough audience to justify my attendance.”*

In the December 1999 issue of *ALS News* (page 29), we advertised the seminars, and in the March 2003 issue of *ALS News* (page 28), I spoke of the customization of the seminar and outlined conditions for putting on the seminar. I said: *“Lately I have been customizing the seminar somewhat to cover topics the practitioner would like to see covered. In 1999, the field staff seminars were essentially a synopsis of the field portion of the Getting it Right seminars. The last few, due to the customization, have been somewhat different and tailored more to the practice as the land surveyor requests. Should you be interested in a field staff seminar please contact me. We will then try to arrange a mutually agreeable date and time. There is no charge for the seminar, however you must provide the venue, and the Alberta Land Surveyor requesting the seminar must also attend the seminar. Depending upon questions and discussions the seminars run from about two to three hours. I need a reasonable number of people attending in order to justify my time and efforts, so if you only have two or three staff, consider speaking to other small practices, and perhaps we can do one field staff seminar that includes three or four smaller practices.”*

If you are interested in one of these seminars, please give me a call.

Case Study No. 20: Intersections and Abandoned Right-of-Way Plans

This is the twentieth in a series of articles featuring problems or issues encountered in Systematic Practice Review. The purpose of these articles is purely educational, so no names or identifying legal descriptions are included. Opinions expressed are those of the author.

The Issue

When can a land surveyor consider a right-of-way abandoned? Part D, Section 4.4 of the Manual of Standard Practice says that abandoned right-of-way plans which are considered abandoned when no interest in the right-of-way exists, do not need to be intersected. The section also indicates the records that should be examined to determine the status of current recorded interests.

The Plan Examination

We examined a right-of-way plan and the survey field notes for a right-of-way that crossed through eleven quarter sections. During the examination, it became apparent that several (at least seven) registered right-of-way survey plans had not been intersected by the practitioner. The question of course is: are they abandoned? We reviewed the titles to the property and found either utility right-of-way agreements or caveats for each of the right-of-ways. EUB pipeline records also showed licensed pipelines for all but one of the right-of-ways. The one right-of-way with no licensed pipeline attributed to it was a power line right-of-way rather than a pipeline right-of-way. Based on our examinations, it would appear

that none of these right-of-ways were abandoned, and intersections in accordance with the requirements of the Surveys Act would be required.

The Legislation

Section 45(1) of the Surveys Act says: *"If a surveyor does a survey for a plan that is required to be registered at the Land titles Office or filed at the Métis Settlements Land Registry, the surveyor shall*

- a) mark the positions of the boundary lines to be established by placing monuments*
 - i) at every change of direction and the beginning and end of every curve, and*
 - ii) at every intersection of the boundary lines with every surveyed boundary of the parcels affected by the new survey, and*
- b) make all measurements necessary to show the positions of the monuments placed and the boundary lines established, relative to the existing surveyed boundary lines of the parcels affected."*

The first question that comes to mind here is what is a parcel? I addressed that very question in Case Study No. 19 in the March 2004 issue of *ALS News* which dealt with governing survey evidence.

The Field Inspection

The field inspection found an overhead power line in one of the right-of-ways, and pipeline crossing signs at road crossings with nothing to indicate that any of the right-of-ways had been abandoned.

The Response

The practitioner in his response requested additional time to investigate the deficiencies found in his right-of-way plan and survey. After

four months, the Practice Review Board requested the practitioner provide his response relative to the right-of-way survey and plan by a specific date. Eventually, the practitioner was required to attend a hearing before the Board and was questioned in part about his failure to intersect the various rights-of-ways. The practitioner could offer no explanation, as to how he determined they did not require intersection. He then undertook to make all the required intersections and correct the plan to reflect the intersections as well as the other identified deficiencies. Eventually, all the required intersections were completed in the field and the plan was corrected several times. The plan received four separate plan corrections before all the deficiencies were corrected.

The Message

Based on this case I think there are two specific messages that emerge.

1. Don't automatically assume that a right-of-way is abandoned. Do your homework, check the titles and EUB records before even thinking it may be abandoned. If still in doubt, check with the operator of the line.
2. Be thorough and detailed in all plan examinations. Include the requirements for posting and intersections as shown in the Surveys Act in your plan examination checks before the plan is registered. If after registration, plan corrections are required, make sure all the required corrections are captured the first time. In fact, if there are numerous errors and deficiencies on a registered plan, it makes sense to do a complete re-examination of the plan after applying the corrections, including running closures on all figures, including survey control.



guardpost

by Dwight Wiberg, ALS

The Director of Surveys provided statistics to Council pertaining to the filing of Form 11.1 within the statutory period for Section 47 plan registrations. The statistics indicate that between, 1997 and 2001, about 25% of all Forms 11.1 are not filed within the period. In 2002, this percentage increased to 43%. The 2002 year statistics may be considered an anomaly due to a 56% increase in the total number of Section 47 plan registrations. The overall average is still in the 25% range which I believe is not an acceptable level for our profession.

Council is very concerned about this trend and has requested the PRB to investigate and resolve this problem. The purpose of this article is to once again bring this matter to the attention of the membership.

The statistics provided also show a 455 day (15 month) benchmark. This benchmark was chosen as a result of the statistics showing that about 85% of Forms 11.1 are filed within that epoch. This trend would indicate that the one year anniversary is maybe the basis to start posting, not complete posting, or that maybe the one year period is not sufficient and should be revised to 15 months.

Another disturbing statistic is that, of the 25% of plans that do not have the Form 11.1 filed, less than 10% have had extensions requested.

The final statistic indicates that during the 1997 to 2002 period, 96.4% of all Form 11.1s are filed after the 455 benchmark. There's a few that seem to get forgotten about resulting in the Director of Surveys trying to chase these to conclusion. It should be noted that this task is not the responsibility of the Director of Surveys.

The question that has been asked is "is there really any harm being done to the public?" Perhaps not, since we

...if monuments are not placed or even if placed but no certification is registered will the Courts find the boundaries illegal?

have not seen any legal challenges arise and since we have a reputation of being "keepers of boundaries" in our land tenure system. There is also good cooperation among our members when it comes to performing surveys in "delay posting" subdivisions. The risk we are taking is to our own individual and the Association's reputation. Are we not capable of abiding by the laws that we had a major influence in writing? If we cannot, then government may limit our ability to self govern.

Another concern regards the consequences of a practitioner failing or neglecting to file Form 11.1 or to receive an extension. The legislation clearly expects a limited term for coordinates to govern. Therefore, if monuments are not placed or even if placed but no certification is regis-

tered, will the Courts find the boundaries illegal?

It has been suggested that we need more education for the membership such as articles in the *ALS News*, the Systemic Practice Review program and the "Getting it Right" seminar. We have already done this. A PRB interpretation was delivered in 2003 and previous articles have been written.

I believe the simple answer is to respect the law. There are valid reasons that prevent completion of postings within the 365 day period. However, there is no reason not to request an extension.

I challenge all members, myself included, who register Section 47 plans to meet the 365 day date or request the extension and meet the extended date no exceptions.

Speakers and Entertainers

Marie Christine Robidioux:
Intellectual Property



(Left to right) Mike Michaud, Ted Dunaj,
Gerry Haekel, Rose Radomsky and
Daryl Gilday: Public Land Dispositions



(Left) Dr. Ian
MacLaren at the
Past President's
Breakfast

(Right) Herb
Dixon at the
Members' Lunch





pdc corner

by Ken Allred, ALS

The Principal Pupil Conundrum

The Canadian land surveying profession is perhaps unique among modern professional organizations in our adherence to a strict contract of articles of service as a means of training new members. Certainly, it is a holdover from times when the surveyor and his articled pupil worked side by side over extended field seasons, returning to an office environment to prepare the survey returns. The articled pupil was the surveyor's right hand man and, in turn, the principal taught the pupil the practical skills and philosophies that were expected of the profession.

The practice of surveying has changed considerably over the years. Today, the surveyor is almost always chained to the office desk and the pupil may also be in the office some of the time but much of the time is likely directing a project that may be many miles from home base. There will likely be several other employees in the survey firm that the pupil has more contact with than his or her principal.

There is however one aspect of the pupil—principal relationship that is still very important. To quote the Articles of Pupil to an Alberta Land Surveyor which every pupil and surveyor must sign under seal and before witnesses:

"...the surveyor covenants with the pupil that the surveyor...will by the best ways and means within his power, and to the utmost of his skill and knowledge, instruct the pupil or cause him to be instructed, in the course of study required...and general in the art, practice and profession of an Alberta Land Surveyor..."

A number of years ago, the ALSA brought in a policy whereby each

principal and articled pupil appeared before the Registration Committee prior to entering into articles to ensure that each party understood their respective obligations under the articling agreement and to ensure that the pupil would be able to obtain the requisite experience necessary to become qualified as an Alberta Land Surveyor. In addition, the pupil engages in an annual interview with the Committee to ensure that the articles are going well and that the pupil is receiving the necessary training.

In today's environment, the student usually comes to the surveyor with a good academic background, usually much better in fact, than the principal. Nevertheless, the surveyor is still obligated to instruct or cause the pupil to be instructed in the art, practice and profession of an Alberta Land Surveyor—training that the student does not receive in academia. This instruction in the practical and professional aspects of the practice of the cadastral surveyor is especially important in bridging that gap between theory and solving the practical problems that the neophyte will encounter every day of their career.

But does that actually happen? What training does the principal actually provide? Does the pupil have the opportunity to attend seminars and courses to assist in his training? Are these courses applicable to the art, practice and profession of a land surveyor? It seems that there is a dearth of such practical training available to students, based on the overwhelming response the Professional Development Committee gets to its annual Exam Preparation seminar.

Most principals appear to rely on the Association to fulfill their mandate of instructing pupils. The Association's job is not to train students

but rather to provide a professional development program for its members. Granted, many of the programs offered to members are also applicable to articling pupils and other staff persons. The Getting It Right seminar, in fact, has very few ALSs in attendance.

The Professional Development Committee seems to have inherited the responsibility for organizing the Exam Preparation seminar held in Red Deer every March. This is a free one-day seminar funded by the ALSA and instructed by dedicated, volunteer presenters. This seminar evolved from a seminar organized by Tom Holt, ALS and a few other interested volunteers some 20 years ago.

The ironic thing about the Exam Prep seminar is that there is not a single presenter that is a principal of the students who attend! Where are all the principals? Why is this seminar not organized and presented by the principals whose students they are obligated to instruct or cause to be instructed? Are the principals getting a free ride from these dedicated, volunteer presenters? Why is the ALSA organizing and funding a seminar to teach the skills that principals are contractually and ethically obligated to provide to their articling pupils? What is wrong with this picture?

Section 1.2 of our Code of Ethics mirrors the articling agreement: An Alberta Land Surveyor has a duty to assist his pupils and employees to achieve their optimum level of contribution to the profession.

An Alberta Land Surveyor:

- shall assist his students/trainees and employees to obtain instruction in the practical, ethical and theoretical aspects of surveying.

- *has a particular obligation to ensure students/trainees receive instruction in the art, practice, ethics and profession of an Alberta Land Surveyor.*

It is clear from both the Articling Agreement and the Code of Ethics that the obligation is not necessarily to instruct the pupil personally but rather to cause to be instructed. With the evolution of the surveying profession in recent years to include large corporate survey firms with surveyors in management positions, it may not be feasible for some principals physically to instruct their pupils. There are, however, many other options.

First, perhaps managing surveyors should not take on articulated pupils if they are not in a position to uphold their end of the bargain.

In larger firms, it should be quite feasible to set up mini-seminars, or even brown bag lunch sessions to discuss various issues that either come up in the course of the practice or alternately issues that are not common to the practice that pupils need exposure to. In the latter case, it may be necessary to bring in an outside resource person to assist.

Another option would be for two or more firms to combine resources and get together on a monthly or quarterly basis to discuss professional issues. This would have benefits for the principals as well as the pupils, allowing all to share and discuss common concerns and practices with their colleagues. It would also assist in creating collegial bonds between and across peer groups.

The bottom line is, however, we are an aging profession, practicing in an active, competitive marketplace, where it is difficult to obtain and retain good qualified staff. We need to plan for succession and we need to ensure that our successors have the best possible training in order that they can address future issues competently and professionally. We all need to pull our weight and we need to work together to optimize our resources.



Exhibitors



public relations

by Andrew Roop, ALS

Creating a Positive Public Image of Land Surveying

The terms of reference for the Public Relations Committee are derived from the Public Relations and Marketing Plan. This plan is updated every five years and outlines a program to market the ALSA and the land surveying profession.

The Public Relations and Marketing Plan is based upon solid research that identifies perceptions about land surveying of the target audiences of our Association. Polling gives us the ability to identify trends, trouble spots, communication challenges and solutions. These are incorporated into the PR Plan.

This document identifies three components to its action program, actions by the ALSA, actions by individual Alberta Land Surveyors, and actions by “messenger parties” outside of the Association.

The ALSA faces an uphill battle in reaching its target audiences by virtue of our relatively small number of members in comparison to the size of its target audiences. Because of this, the ALSA must rely on these messenger parties to promote our profession. These messenger parties include the general public, realtors, lawyers, developers and homebuilder, municipal officials and educators.

To ensure that the use of these messenger parties is effective, the ALSA must concentrate its efforts on educating and providing these groups the tools they need to effectively promote the surveying profession. In 2003, the Public Relations Committee developed a brochure and a poster related to monument destruction “*I Destroyed Survey Evidence*,” and updated the brochure “*Alberta’s Subdivision Process*.” Other brochures developed by the ALSA

...the committee hopes that valuable information will be gained that will determine if the efforts of the committee over the past ten years have been effective and to provide direction for the next five year plan.

include *The Real Property Report*, *Surveying for Alberta’s Municipalities*, *The Future of Geomatics*, “*he Real Property Story*,” and *Understanding Easements and Rights-of-Way*. Once these materials are developed, we must continue to be proactive in distributing these materials to target groups so that our message does not just “stay on the shelf.”

As Alberta Land Surveyors, we are all ambassadors for the Association and the surveying profession. In our everyday dealings with our clients and the public, we have many opportunities to enhance our image as professionals and educate others about what it is that we do. The land surveyor must capitalize on developing positive relationships with the messenger parties. This would include staying informed of issues facing these groups and taking advantage of opportunities to participate in events held by them. Alberta Land Surveyors and their firms should also participate in and sponsor community events whenever possible. Participating in events such as the Corporate Challenge or charity runs or community sports leagues not only enhances the image of your company and the surveying profession but also improves fitness and morale of your staff.

Our survey crews often provide the first impression of land surveyors: their appearance and actions play a big part in how the land surveyor is perceived. The public often perceives our field staff as “the land surveyor,” and this largely contributes to the image of the surveying profession. The ALSA recognition of this is evident by its promotion of the use of *Thank You Cards* (available free of charge through the ALSA) and its adoption of the *Alberta Land Surveyor’s Commitment to Property Damage Mitigation and Minimizing the Impact of Accessing Monuments* into the Manual of Standard Practice (Part E, Appendices, Section 9). The survey crews should be instructed to attempt to make contact with every landowner whose property they must enter upon to conduct their survey and leave their cards when personal contact is not made.

The Association office is the main point of contact for many members of the public and the media. The Association sometimes receives calls from landowners concerned about damage to their property by surveyors. Hopefully, since we have all adopted the procedures for mitigation of property damage and minimizing the impact of accessing monuments, these calls are occurring less frequently. Since members began using *Thank You Cards* the number of complaints has declined to only a few. By letting the homeowner know what we are doing contributes considerably to develop a positive image of our profession.

The use of the media through news releases, marketing, and event announcements is a powerful means of conveying our message. Every two years, Council members and some committee chairmen participate in media training so they can be effective communicators on radio, televi-

sion and in the newspapers. If you have an opportunity to participate, don't pass it up.

One of the action items on the Public Relations Committee's agenda is to review and update the Public Relations and Marketing Plan for 2004-2009. The first formal plan was developed in 1994 and was based on polling and questionnaires conducted with the general public, realtors, lawyers, developers and home-builders, municipal officials, and educators. Further polling of these groups is currently underway, and the committee hopes that valuable information will be gained that will determine if the efforts of the committee over the past ten years have been effective and to provide direction for the next five year plan.

Partners' Program



The Surveys and Technical Services Section of Alberta Sustainable Resource Development is working on several initiatives designed to improve and update our services to you and all Albertans.

1) Director of Surveys approves and confirms Official Surveys

Shortly after being originally surveyed by A.W. Ponton, DLS and T.H. Plunkett, DLS in 1908 and 1911, the 5th Meridian between Townships 89 and 108 was determined to be incorrect. J.A. Fletcher, DLS in 1915 moved the monuments at the NE corner of Section 36, Townships 92, 96, 100, and 104 to their correct position. All other monuments were not corrected. The historical official 5th Meridian plans (89 to 108) available on SPIN reflected the original intent to have these monuments moved to their intended position. The plans contain a note indicating, "monuments between baselines are not in true position" and indicated the proportional distance for each quarter section.

On February 27, 2004, the Director of Surveys confirmed and approved a group of three plans created by the Federal Government for the rectilinear boundary of Wood Buffalo National Park. Parts of these new plans supersede the 5th Meridian plans along Townships 105 to 120 as well as official baseline plans along the 27th Baseline between Townships 10 and 24. On March 1, 2004, the Director of Surveys confirmed and approved four new east outline plans superseding the official plans representing the 5th Meridian along Townships 88 to 104. All of these plans have been added to Alberta

Registries internet-based application SPIN. The Wood Buffalo plans are part of the registered plan database and the four new east outline plans are part of the Director of Surveys official plans database.

2) Non-Monumented Survey Plans (Section 47, *Surveys Act*)

The Director of Surveys office continues to monitor plans registered under Section 47 of the *Surveys Act*. The review of registrations for the year 2002 has been completed and the following statistics are available:

- Total number of Section 47 plans = 405 (269 North and 136 South)
- Section 47 Subdivision Plans = 349 (234 North and 115 South)
- Number of Section 47 plans, as of June 1, 2004, with Form 11.1 incomplete = 30 (20 North and 10 South)
- Total number of Section 47 plans that did not comply with the *Surveys Act* (registration of Form 11.1 within 12 months) = 172 or 42%.

Surveyors' cooperation is requested to ensure that the requirements of Section 47(3) are fully complied with.

3) Standards and Procedures for Digital Plan Submissions for Public Land Dispositions

Discussions have been initiated with the Standards Committee to develop standards and procedures for digital plan submissions for disposition application and final plans on public land. The goal is to finalize the standards and procedures for voluntary submissions in the Fall of 2004. The following are key components for the Public Lands and Forests Division:

- Build on the existing digital submission standards used for Land Titles submissions.
- Provide for secure data transmission.
- Add the requirement of georeferencing the CAD file.
- Submit three data files; CAD file, TIFF file, and a modified DiPS file.

The ALSA Standards Committee has asked Council to establish a subcommittee under the Standards Committee to investigate these issues and make recommendations to Council.

net notes



Who couldn't use a little help with grammar and writing style? Most of us probably haven't given it much thought since our grade school or university days. But if you want to tidy up your pronouns, here are a couple of sites you might want to visit.

The Blue Book of Grammar and Punctuation

www.grammarbook.com

The Curmudgeon's Stylebook.

www.theslot.com/contents.html

Daily Grammar

www.dailygrammar.com

The Elements of Style

www.bartleby.com/141/index.html

Guide to Grammar and Writing

www.ccc.commnet.edu/grammar



education news

University of Calgary

Best Paper Award

The Department is pleased to announce that Eun Shin and Dr. Naser El-Sheimy won the best paper award of Track B at the IEEE PLANS (Position Locations and Navigation Symposium) 2004 conference (April 26 to 29, 2004, Monterey, CA, USA) for their paper "An Unscented Kalman Filter for In-Motion Alignment of Low Cost IMUs." Track B includes 28 papers on Inertial Navigation applications.

MAY 14, 2004

Best Presentation Awards

The department is pleased to announce that Walid Abdel Hamid and Matthias Weigelt won the "Best Presentation Awards" at The First Annual Faculty of Engineering Graduate Student Research Conference for the Instrumentation & MEMS and the Mathematical Techniques streams, respectively. Walid Abdel-Hamid (PhD student) is working under the supervision of Drs. Naser El-Sheimy and Gerard Lachapelle, and Matthias Weigelt (PhD Student) is working under the supervision of Drs. Nico Sneeuw and Michael Sideris.

MAY 14, 2004

Alberta Ingenuity Fund

The Department of Geomatics Engineering is pleased to announce two recipients of the Ingenuity MSc Studentship Awards. Congratulations to Rita Cheng under the supervision of Dr. Ayman Habib and Lance de Groot under the supervision of Dr. Susan Skone. Congratulations! We hope that this award will contribute substantially to your successful and rewarding research training in Alberta.

APRIL 21, 2004

University of New Brunswick

Prof. Yun Zhang Finalist for Prestigious Award

Our congratulations to Dr. Yun Zhang who was nominated as one of the three finalists in the 2004 KIRA Awards "Technical Advancement / Innovation—Public Sector" category. Dr. Zhang was recognized for his research and development in image processing.

The KIRA Awards, given by Enterprise Fredericton, offer companies within and supporting the information and knowledge industries in New Brunswick the opportunity to celebrate their information technology successes and innovation by acknowledging individual and company achievements. This provincial event offers awards in seven categories.

The Technological Advancement / Innovation - Public Sector award recognizes outstanding achievement in the use or development of information technology to improve and/or enable innovation in the management and delivery of services and programs. This category is open to the New Brunswick public sector, including provincial and municipal governments and departments, hospitals, crown corporations and schools / school boards.

GGE Graduate Student Travis Wert's Excellent Adventure in the Canadian Arctic

Beginning in the Fall of 2003, members of the Geodetic Research Laboratory (GRL) and the Ocean Mapping Group (OMG) of the Department of Geodesy and Geomatics Engineering (GGE) have been taking part in the Canadian Arctic Shelf Exchange Study

(CASES). CASES is aimed at studying the relationship between the biologic, chemical, atmospheric, and hydrographic factors that are all at once influencing the sea ice and Arctic waters. While Canada has taken a lead role in this endeavour, scientists from numerous other countries, such as Japan, Poland, Switzerland, the Netherlands, the United Kingdom, and the United States, are taking part.

SAIT

As the school year comes to a close, another great group of students heads out to join the work force, both for summer employment and to start their career in geomatics. It's always such a great time at the end of the year listening to students talking about the great companies they will be working for and the new experiences ahead of them.

Our graduation ceremonies took place on May 28th in the Jubilee Auditorium. This year, we graduated 28 Geomatics students, 17 from our surveying option and 11 in the mapping option. The two years they students spend here at SAIT seems to fly by so fast from an instructor's perspective. The employment rate for our graduates is 100%; there seemed to be many more jobs than we had students.

We appreciate all the support from industry for our first year students as well; approximately 70% had summer jobs in industry before the end of April. It is a great benefit for the students to have a summer of practical experience before starting their second year.

It looks as though we'll have a busy fall this year; the program is full with 40 students, though we currently have a waiting list. This fall, our second year students will head out on

their one-week practicum from October 25th to the 29th inclusive. Last year, I was overwhelmed by the support from industry and am looking forward to working with everyone again this fall.

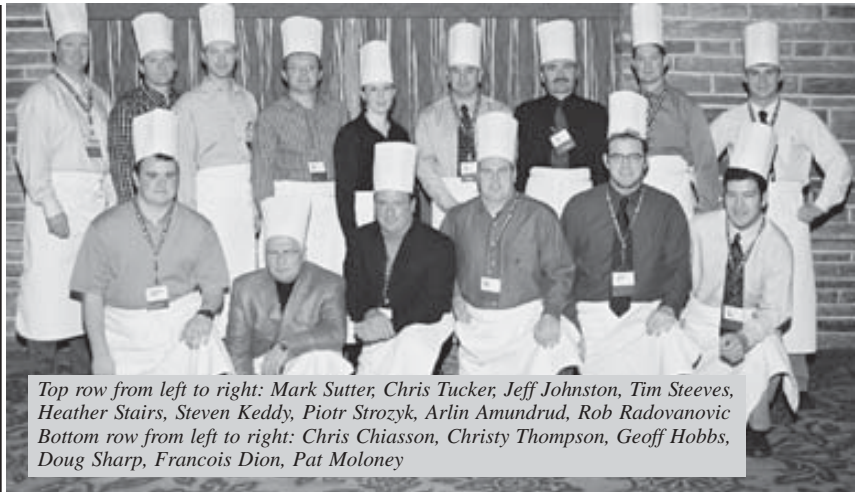
There have been some changes in our survey certificate this year, which is offered through our Continuing Education Office on evenings and weekends. The full certificate is 160 hours and was typically set up for people working in the office environment. This year, we have added three new courses:

- advanced total stations,
- GPS fieldwork, and
- GPS theory.

These three courses, together with the required courses, complete option C designed for those looking to work in the field.

GREG HEBB
INSTRUCTOR

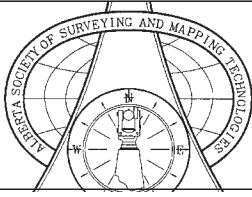
Past Presidents' Breakfast



Top row from left to right: Mark Sutter, Chris Tucker, Jeff Johnston, Tim Steeves, Heather Stairs, Steven Keddy, Piotr Strozyk, Arlin Amundrud, Rob Radovanovic
Bottom row from left to right: Chris Chiasson, Christy Thompson, Geoff Hobbs, Doug Sharp, Francois Dion, Pat Moloney



Top row from left to right: Larry Pals, Dave McWilliam, John Holmlund, Lyall Pratt, Dick Bassil
Bottom row from left to right: Bob Baker, Charlie Weir, Army MacCrimmon, Buck Olsen, Ken Allred



assmt notes

by Mike Spencer, Certified Survey Technologist

Before discussing recent ASSMT activities and future directions, we would like to say a word or two about our recently retired Executive Manager, Stutt Pottruff.

Regular readers of this column will know that it has been a very long time, since 1989, that anyone besides Stutt has written in this space. A huge thank you from all members of the ASSMT must go out to Stutt for his dedication to penning informative and warmly written "ASSMT Notes" all these years. As the Society moves forward, those that are engaged to report in this column will be well served by the excellent example set by our friend Stutt.

Since Stutt's last article in *ALS News* in December 2003, much has taken place within our Society. In February, Cathryn (Cat) Gramolini was chosen as our first executive assistant. Since that time, she has kept busy getting to know our organization, establishing wider communication to the surveying and mapping industry and generally helping wherever she can. There is a great deal of work ahead but, we on Council, think that Cat will help to increase the Society's profile, get us better organized and provide plenty of motivation to our volunteer group. Cat can be reached by phone at (403) 244-3476 (after 11:00 a.m. weekdays) or via email at info@assmt.ab.ca.

In late March, two regional meetings were put on by the ASSMT, one in Edmonton, organized by Glen Erdely, and one in Lethbridge, organized by Mike Spencer. Both events were well attended, with a good mix of members, non-members and geomatics students.

In Edmonton, presenters were Kevin Laiss of Baseline Geomatics, who discussed the "Challenges and Rewards of Operating a Small Geomatics Firm, and Gary Bondarevich, who profiled Stewart

Weir and Company as well as providing a demonstration of their Cyra Laser Scanning equipment. A presentation showcasing Trimble robotic total stations was put on by Joe Chisholm of Cansel in Lethbridge and was met with great interest, especially by the students from the Lethbridge Community College.

The formula for putting on a successful regional meeting appears to be quite simple; provide interesting presentations, updates as to what is happening within the Society, some food and libations and, perhaps most important, providing a chance to get together with others in the industry. We look forward to organizing more events such as these on a twice yearly basis in as many locations as is feasible. Consider attending one near you this fall!

At our April Council Meeting, a sample syllabus was tabled by David Allen and Clint Johnson of the Certification Review Subcommittee that was designed to provide a credibility check for ASSMT applicants. This testing mechanism was considered by Council to be a mandatory initiative and will likely be instituted in a slightly revised form in the coming months.

Friday and Saturday of the May long weekend brought our Annual General Meeting at The Delta Lodge at Kananaskis and, while the weather certainly could have been better, the forty-five participants all seemed to agree that their time was well spent. Thanks go to our major sponsors: Challenger Geomatics Ltd., Midwest Surveys Inc, Mike Spencer Geometrics Ltd., Millennium Geomatics and Stantec Geomatics and to our co-sponsors: Brown Okamura and Associates, AMEC Infrastructure and MPE Engineering. Next, we thank our presenters at the Friday "AGM Opener, all of whom offered high calibre sessions. Leading

off, we were honoured to have Jim Halliday, Past President of the ALSA, speak about the year 2003-2004 happenings within the Association as well as comment on its relationship with our Society.

Next up was Art Silver of LiDAR Services International Inc. who enthusiastically presented "Mapping at the Speed of Light—An Introduction to Airborne LiDAR Technology" as well as giving us a glimpse of his past life as a desert island castaway!

Following Art, Bob Hoffas of Olds College gave the attendees some very good background information about the new Land Information Systems diploma program that he is heading up.

Finally, and not to be outdone, Rob King, ALS (Midwest Surveys) described methods of "Integrating GIS with the Surveying Industry." Chris Ross of Lethbridge, our AV expert, challenged the group with his "Kananaskis Quiz" following which, Butler Survey Supplies Ltd. kindly donated a handheld GPS unit to the winner of the quiz—Bob Chambers of Alberta Environment.

Thanks also should go out to the companies who provided displays and demos, they were: Butler (Curtis Boechler and John Knight), Cansel (Kyle Canning), IHS Energy (Steven Marinoske) and Spatial Technologies (Brett Findlater).

"The AGM Opener" got Friday off to a good start and was followed by a guided hike led by Bud Ittenger of "Back and Beyond Adventures." The "Friday Awards Dinner" provided a great deal of mingling, and Stutt Pottruff was honoured by Barry Bleay on behalf of the ASSMT as well as other Council Members who were stepping down. The AGM was held on Saturday.

We thank those stepping up to the ASSMT Board - Ken Revoy was

elected president and Barry Bleay was elected vice-president. The new Council will be Glen Erdely (2 years); Tammy Finn (2 years); Cathy Sprott (2 years); George McGeachie (one year); Clint Johnson (returning one year) and Mike Spencer (one year). In addition, David Allen will remain on the Executive as past president and Hugh Furber stays on as registrar. Thanks go to the departing councillors for their contributions, they were: Dale-Lynn Lawrence, Shannon Hala, Joe Liu and especially Wayne Latam.

As the summer approaches, we look forward to working with the new ALSA Liaison, David Marquardt, ALS and thank you to Bernard Lamarche, ALS, for filling that role in 2003-2004. Thanks must also go to Terry Mitchell for taking care of the Treasurer's duties these past two years. Our 2005 AGM will be held in Red Deer on April 29 and 30.

There was plenty of enthusiasm generated for our Society at the AGM and over these past few months but the Executive and Council knows it

must keep working hard to maintain the momentum. There are plenty of issues that need our attention, one of the most important of which is to take advantage of the recent offer extended by NAIT, SAIT, LCC and Olds College to form an alliance with the ASSMT and standardize night and weekend courses in surveying and mapping. This will allow us to better evaluate new member certifications as well as existing member upgrades. Collaboration with the educators of the province is vital, as is the continued need to reach out to young people looking to make a career choice. We know that this is an ALSA priority as well and perhaps this is another one of the many ways we can team up to achieve our goals. Council will reconvene on June 10th.

We wish ALSA President A.W. (Al) Nelson and the ALSA Council well, as you commence operations for another year. The ALSA AGM in Jasper was exceptional.

On behalf of the 2004-05 Executive and Council Members, have a great summer!

Hockey Night in Jasper



a moment of silence

Robert McCutcheon

DLS, ALS (Hon. Life)

March 30, 1909 to March 14, 2004



Bob McCutcheon was born in Bridgeport, Connecticut, to an Irish father and a Scottish mother who had emigrated to the United States one

year previously.

The family moved to Calgary in 1912, where his father resumed his occupation as a carpenter. The family lived, for the most part, on the 'North Hill' where Bob and his younger sister Florrie received their secondary education at what was then Balmoral High School on 16th Avenue North, West of Centre Street.

Soon after graduating from high school, Bob went to work for Mr. D.T. Townsend, a land surveyor for the Canadian Pacific Railway. At that time, the CPR owned the land now occupied by such districts as Scarboro, Sunalta and Upper Mount Royal. Most of these areas were subdivided by Mr. Townsend with Bob McCutcheon acting as his assistant. In time, Bob articulated to Mr. Townsend, receiving his DLS (Dominion Land Surveyor) commission in 1939, and subsequently his Alberta Land Surveyor's commission on May 13, 1940.

It was during the years when Bob was working toward his professional status as a land surveyor that he and Margaret McNeil were married in February 1933. Bob often spoke of the support and encouragement he received from Margaret during those

months when he was preparing for his examinations. To his great sorrow, he lost his Margaret in January 1979.

During the war years, Bob served with the RCAF as a navigational instructor, both in Canada and overseas, from 1941 to 1945.

In 1947, he began his private practice, operating from his home, then moving to an upstairs office over what was then a bank on the north-east corner of 8th Avenue South, and 1st Street East. Some time later, he moved to a space above Hall Hardware at 115A-8th Avenue East (currently the Marriott Hotel complex). Bob's last move was to the 300 Block on 7th Avenue West, over Campbell Floral (now part of the Devonian Gardens). Good features of this location were its proximity to the Land Titles Office and its ideal vantage point from which to watch the Stampede Parade!

During the years of operation, Bob's clients included the "majors" in the oil and gas industry, in the utility companies and in the land development field. His many plans, which can be found in the two Land Titles Offices, will attest to the variety of surveys that he performed. In 1965, Bob sold the business to five of his employees, of which two were already land surveyors and two more would go on to become land surveyors in later years.

Bob's record with the Alberta Land Surveyors' Association speaks for itself. He served as president on two occasions. After his retirement in 1965, he maintained a keen interest in the profession, working with several surveyors to whom he would offer assistance if requested.

Bob was a highly respected senior member of the Alberta Land Surveyors' Association. He was given an

honorary life membership in 1975 and also an award for outstanding service in 1982. His passing was marked by two minutes of silence at the 2004 Annual General Meeting.

He will be missed by his fellow land surveyors, who knew and respected him and his leadership.

Bob leaves a son Robert and daughter-in-law Wanda (nee Blackburn), now residing in Oklahoma City.

ARMY MACCRIMMON, ALS (HON. LIFE)

Don L.F. Moore (Former ALSA Member)

March 9, 2004

MOORE, Don Lewis Fordham Moore of Spirit River, Alberta passed away on March 9, 2004 after a valiant battle with cancer. Don was in his 80th year. Don will be forever in the hearts of his wife and soul mate Vi, daughters Pat Moore-Juzwishin (Don), Margaret Morley (Rob), and Laurie McGraw (Louis), and his grandchildren Kelsey, Petra and Avril Juzwishin, Peter and Benjamin Morley, and Zachery, Amiyah, and Madison McGraw. Don is also survived by his sisters Katherine Dexter and Peggy Swanston (Jack), and predeceased by his parents, Don and Muriel Moore, and brother-in-law Ray Dexter. Don was a Professional Engineer, graduating from the U of A in Chemical Engineering in 1949, attained his Alberta Land Surveyor certification in 1955, and was a farmer. He worked in each of these fields over the years but his family always knew him as a farmer at heart.

Note: The above is an excerpt of the obituary for Don Moore published in the Edmonton Journal on March 12, 2004.

Kasimir Sawicki, ALS (Ret.)

August 29, 1927 to June 6, 2004

SAWICKI, Kazimierz (Kasimir) On Sunday, June 6, 2004, much loved husband, father and grandfather Kazimierz (Kasimir) Sawicki passed away at the age of 76. He will be dearly missed and lovingly remembered by his devoted wife of 48 years Emma, his daughter Greta (Tony) Derus, and grandson Joshua. His brother Tadeusz (Jadwiga), uncle Wladyslaw Matuszczyk, all of Poland, his mother-in-law Wanda Chodkiewicz, sister-in-law Janina (Stanislaw) Muszynski, brothers-in-law Emanuel (Jadwiga) Chodkiewicz, William (Rose) Chodkiewicz, Alex (Barbara) Chodkiewicz, all of Edmonton, and numerous cousins, nephews, nieces and friends in Canada, U.S.A., Poland and Germany will mourn his passing. Kazimierz was predeceased by his parents, Czeslaw and Maria, and his beloved son Andrew in 2002.

Note: The above is an excerpt of the obituary for Kasimir Sawicki published in the Edmonton Journal on June 11, 2004. A memorium will be published in the next issue of ALS News.

President's Message continued from page 5

led to the formation of this Committee. Others may include:

- Membership for other disciplines, land-related information management, construction surveys, planning, deformation, precision and machinery surveys and many others);
- Licensing of other disciplines;
- Two-tiered licensing of practitioners to offer services to the public;
- Potential for licensing of unique cadastral disciplines under the umbrella of legal surveys. This may equate to licensing under specific expertise such as land development, oil and gas, oil sands work and others;
- Educational standards;
- Entry standards;
- Mutual Recognition Agreement and our relationships with our neighboring provinces.

It becomes apparent that other committees will interact to a large extent with this one and that the analysis of each issue is complex and interdependent upon other issues and other committees.

Interprovincial Issues

The Province of Alberta and our members are in a very enviable position in terms of our position in

self-governance, our economic environment and our comparative ability to attract new members. If we have identified the declining membership and the demographics as a real concern to our future, how do you rationalize what our neighbors are going through with virtually no new candidates? We must assist in all ways possible to attract new cadastral and geomatics members to the entire profession across Canada. Looking internally is no longer an option. The Mutual Recognition Agreement renders a distinct effect on all jurisdictions when each province or jurisdiction deals with educational, entry and licensing issues. The future of the entire survey profession across Canada may well be at stake and we have the opportunity to do something about it.

Thank You

I thank the membership again for the opportunity to serve in this position and thereby return a small bit of what this profession has offered to me.

I also would like to recognize the generosity of Stewart, Weir & Co. Ltd. to allow me the latitude (and the longitude) to pursue this commitment. I look forward to the next year and to hearing personally from any of you who have issues, suggestions or the burning need to help out one of the committees.

Executive 2004-05



*President Al Nelson
and Nancy*



*Vice President
Stephen Green and
Janet MacPhee*



*Past President Jim
Halliday and
Joanne*



*Secretary Treasurer
Larry Pals and Judy*



*Executive Director
Brian Munday and
Lynn*



discipline decision

Concerning the professional conduct of Richard Schlachter, A.L.S.—
hearing held in Edmonton on July 9, 2003

Introduction

Richard Schlachter was, at all material times, an Alberta Land Surveyor. He and a man named Jurjen K. Lock were the directors of a corporation known as Terre-Alta Corp, which held a permit to practice land surveying from the Alberta Land Surveyors' Association ("ALSA"). At all material times, Lock was also the director of a company known as Terre-Alta Surveys and Services Inc. ("TASSI"). In 2002, Schlachter subcontracted with TASSI to assist him in preparing certain Real Property Reports ("RPRs"). At all material times, Lock was not an Alberta Land Surveyor nor did TASSI hold a permit to practice from ALSA.

In 2002, ALSA became aware that TASSI had entered into a number of agreements whereby TASSI would prepare RPRs on behalf of a client and Schlachter would sign off on them. Throughout, TASSI appeared to have given the client the impression that it was a surveying corporation when, in fact, Terre-Alta Corp. was the surveying corporation, not TASSI.

As a result, the Executive Director of ALSA made a complaint to the Registrar of ALSA who commissioned the Chairman of the Discipline Committee to investigate the circumstances surrounding the complaint. At the conclusion of the investigation, the Chairman of the Discipline Committee referred the matter to the Discipline Committee and the matter was directed to a hearing. Notice of the hearing was sent to Schlachter on June 5, 2003.

The Issues

The following allegations made against Schlachter were set out in the Notice of Hearing:

1. Schlachter breached Section 2(8) of the Code of Ethics (Alberta Regulation 324/82) of ALSA and, more

specifically, failed to adhere to the Commentary to the Code of Ethics as stated in the Manual of Standard Practice, Part B, s. 1.9, which require an Alberta Land Surveyor to assist in preventing the unauthorized practice of land surveying, and

2. Schlachter deviated from Part B, ss. 3.1.1 and 3.1.2 of the Manual of Standard Practice which deal with technical services subcontracting and require that the Alberta Land Surveyor engage personally in client liaison and new business development and issue all work instructions to and receive the completed work from the subcontractor in person. The Notice states that the particular matters to which these complaints relate are as follows:

- a. The relationship between Richard Schlachter, ALS and Terre-Alta Surveys & Services Inc. and Jurjen K. Lock during the period of March 2002 to December 2002, related to Real Property Reports done by Terre-Alta Surveys & Services Inc. and Jurjen Lock and signed by Richard Schlachter, ALS
- b. The Real Property Report dated June 11, 2002 signed by Richard Schlachter, ALS in respect to the property described as North 131 feet of Lot 16, Block 4, Plan 6228 HW, Edmonton, was prepared for Pentagon Structures Ltd. It is alleged that all client liaison and invoicing were done by Terre-Alta Surveys & Services Inc. and not done by Richard Schlachter, ALS
- c. It is further alleged that during the period in question, other Real Property Reports were done where the client liaison and invoicing were done by Terre-Alta Surveys & Services Inc.
- d. It is alleged that the circumstances were such that Real Property Reports were prepared and were signed by Richard Schlachter, ALS

without the clients being aware that Terre-Alta Surveys & Services Inc. was not a surveyors' corporation as defined under the *Land Surveyors Act*.

The Notice also states that the allegations, if proved, could constitute unprofessional conduct or unskilled practice or both.

The Committee must therefore determine:

1. Whether Schlachter has breached Section 2(8) of the Code of Ethics and failed to adhere to s.1.9 of Part B of the Manual of Standard Practice,
2. Whether Schlachter has deviated from Part B, ss. 3.1.1 and 3.1.2 of the Manual of Standard Practice, and
3. Whether either misconduct, or both, amounts to unprofessional conduct or unskilled practice or both.

The Facts

The Committee received an Agreed Statement of Facts, along with supporting documents, submitted, jointly, by Counsel for Schlachter and Counsel for ALSA. The Committee has accepted the Agreed Statement of Facts, along with the supporting documentation, and adopts the facts set out below as the Committee's findings of fact.

The Committee also heard *viva voce* testimony from Schlachter in the form of answers to questions posed by the Committee. Where the Committee's findings of fact are based on the *viva voce* testimony, as opposed to the Agreed Statement of Facts, the Committee has stated this.

The following are a list of facts and admissions that were entered as evidence in the hearing and upon which the Committee relies in making its decision:

1. Mr. Schlachter was, at all material times, an Alberta land surveyor.

2. Terre-Alta Corp. is a surveyor's corporation that was incorporated on August 19, 1999. Schlachter owns 51% of the voting shares in Terre-Alta Corp. and Lock, at all material times, owned the remaining 49%. Schlachter testified that Lock's wife was the administrator of Terre-Alta Corp. ALSA approved Terre-Alta Corp. for a permit to practice on September 30, 1999.

3. At the same time as Terre-Alta Corp. was formed, Lock was the owner of TASSI, a company that practices as "an integrated geomatics services company, designed to offer field and office services to the construction, engineering, resources, and land development sectors in Western Canada" as written in the company's own literature.

4. On or about October 18, 2001 Schlachter advised the ALSA that he was moving from Edmonton to Calgary and wished to discontinue the legal survey activities of Terre-Alta Corp. but was retaining the permit to practice so that he could clean up some outstanding survey plans.

5. Schlachter moved to Calgary and took up other employment while attempting to sell his Edmonton practice and continuing to wind down the survey activities of Terre-Alta Corp.

6. While Schlachter's practice was officially relocated to Calgary, he continued to accept RPR referrals from his Edmonton clients, through the offices of TASSI. Schlachter continued this practice by traveling to Edmonton twice a month, and by utilizing cellular phone, couriers and fax.

7. Lock's wife also continued as administrator of Terre-Alta Corp. from her location in Edmonton.

8. Lock, as an officer, owner and director of TASSI continued to offer RPRs and grading certificates endorsed by an Alberta Land Surveyor and also listed an hourly rate for an Alberta Land Surveyor and legal iron posts as an item in their listing of services offered.

9. Copies of two quotations by TASSI were offered as evidence. These quotations reflected estimates for services including "RPR (Real Property Report) and Grading Certificate endorsed by an Alberta Land Surveyor" and also included a copy of the fee schedule to be used if "extra charges" are required. The fee schedule included rates for "Alberta Land Surveyor at \$85.00 per hour and legal iron posts at \$10.00".

10. On April 8, 2003, ALSA received a letter from Schlachter requesting that Terre-Alta Corp. be removed from the register as a surveyor's corporation. The Committee's internal records show that Terre-Alta Corp.'s permit was cancelled prior to May 22, 2003.

11. Subsequent to the complaint being lodged, but prior to the matters being heard by the Committee, Lock has ceased to be a shareholder in Terre-Alta Corp. and his shares have been transferred to Schlachter, making Schlachter the sole owner of Terre-Alta Corp.

12. Terre-Alta Corp. has gone through a name change to 842611 Alberta Ltd.

13. At all material times, Lock was not an Alberta Land Surveyor.

14. At all material times, TASSI was not a surveyor's corporation.

Specific Evidence Received regarding a RPR on a portion of Lot 16, Block 4, Plan 6228 HW

1. The title was searched on May 23, 2002.

2. Lock referred the job to Schlachter on May 31, 2002. Schlachter gave evidence that this RPR was a referral from Lock on behalf of "Klaus" at Pentagon Structures personally, and that all client liaison and contacts for this RPR were carried out by TASSI and Lock.

3. The RPR in question was completed under Schlachter's supervision by sub-contractor TASSI's staff, who sent the survey returns and materials to Schlachter for his review and approval.

4. TASSI invoiced Pentagon Structures for the RPR on June 3, 2002.

5. Pentagon Structures received TASSI's invoice for the RPR on June 6, 2002 and indicated paying TASSI's invoice on June 18, 2002, by stamping it paid.

6. Terre-Alta Corp. invoiced Pentagon Structures on June 18, 2002.

7. Schlachter signed the RPR on June 24, 2002.

8. Schlachter testified that he believes, in this case, that the Terre-Alta Corp. invoice was intercepted and a TASSI invoice was forwarded to the client, along with the final documents.

9. In responding to questions by the Committee, Schlachter advised that, during the normal course of a project, and once the survey work and plans were completed by TASSI, Lock's wife would prepare an invoice under Terre-Alta Corp. All project documentation, including this invoice, would be sent to Schlachter, in Calgary, for his review. Schlachter would then "sign off" on the project and return the documents, along with the Terre-Alta Corp.'s invoice, to Lock's wife, who would then deliver the invoice and final documents to the client.

10. ALSA received a fax from Pentagon Structures dated January 23, 2003 which included a copy of the subject RPR by Terre-Alta Corp. and an invoice for the subject RPR issued by TASSI.

11. Brian Munday, Executive Director of ALSA, received a voice-mail from Paul of Pentagon Structures on January 24, 2003 (a transcript of which was submitted as evidence) inquiring about TASSI and Terre-Alta Corp., and the "insurance they are required to maintain in order to be members" of the ALSA. Paul went on to say "I think they are all one and the same company making a claim that they are Land Surveyors."

12. In a letter dated March 28, 2003 from Terre-Alta Corp. to Ken Allred, Chairman of the Discipline Committee of ALSA, Schlachter states that he first learned of a complaint of potential surveyor misrepresentation by

TASSI on December 13, 2002 and that he spoke to Lock on the same day, expressing “grave concern that he or his staff may be promoting themselves as Land Surveyors.” He then reminded Lock “(as I had done several times in the past) that he cannot pursue, advertise, complete nor represent the capability of completing, RPR’s”.

Decision of the Committee

The Committee finds that Richard Schlachter breached Section 2(8) of the Code of Ethics and failed to adhere to Part B, s. 1.9 of the Manual of Standard Practice. The Committee also finds that Schlachter deviated from Part B, ss. 3.1.1 and 3.1.2 of the Manual of Standard Practice. Having regard to the circumstances of this case and the Committee’s finding with respect to the first two allegations, the Committee finds Schlachter guilty of unprofessional conduct.

Reasons for Decision

In these reasons, each allegation is addressed separately. It should also be noted that the standard of the actual surveys was not the subject of any of the allegations, nor was any evidence given on them.

Breach of Section 2(8) of the Code of Ethics

Relevant Legislation

Section 1(a) of the *Land Surveyors Act*, R.S.A. 2000, c. L-3 (“*LSA*”) states that “‘Alberta land surveyor’ means an individual who holds a certificate of registration and an annual certificate to engage in the practice of surveying under this Act.” The “practice of land surveying,” as defined in s. 1(i) means:

- (i) the survey of land to determine or establish boundaries;
- (ii) the survey of land to determine or establish the boundaries of any right or interest in land or in air space;
- (iii) the survey of air space to determine or establish boundaries;
- (iv) the survey of land to determine the location of anything relative to a

boundary for the purpose of certifying the location of the thing;

- (v) the survey of lakes, rivers or watercourses to establish or determine their boundaries;
- (vi) the survey by any means, including photogrammetric, electronic or astronomic methods, of land, water or air space for the purpose of preparing maps, plans and documents connected in any way with the establishment or determination of boundaries delineating any right or interest in land, water or air space;
- (vii) cadastral operations and compiling and recording information related to the matters specified in subclauses (i) to (vi);
- (viii) establishing and maintaining a network of geodetic point of any order of precision and establishing photogrammetric controls for the purposes of subclauses (i) to (v), including the preparation of maps, plans and documents and the giving of advice with respect to any of the matters specified in this clause.

Section 1(j) holds that the “practice of surveying” means:

- (i) the determination, establishment or recording by any means of the positions of points, natural features or features made by persons on, over or under the surface of the earth,
- (ii) the determination of the form of the earth,
- (iii) the practice of land surveying, and includes the preparation of maps, plans, systems and documents and the giving of advice with respect to any of the matters referred to in this clause.

Under s. 1(k), “practitioner” refers to an Alberta land surveyor, surveyor’s corporation or surveyor’s partnership, as the case may be. Section 1(m) of the *LSA* defines “surveyor’s corporation” as meaning “a corporation that holds a permit to engage in the practice of surveying under this Act.”

Section 1(n) defines “surveyor’s partnership” as meaning “a partnership that holds a permit to engage in the practice of surveying under this Act.”

Section 3(1) of the *LSA* holds that “no person except an Alberta land surveyor, surveyor’s corporation or surveyor’s partnership shall engage in the practice of land surveying.”

Section 2(8) of the Code of Ethics of ALSA states that “an Alberta Land Surveyor shall assist in preventing the unauthorized practice of land surveying.” The commentary on this point, as stated in the Manual of Standard Practice, Part B, s. 1.9, bullets 2 and 4, hold that:

An Alberta Land Surveyor shall:

- not enter into any agreement that will enable an unqualified person or corporate body to complete a land survey directly or indirectly.
- not establish offices or branches unless these centres are under the full-time direction and management of a resident Alberta Land Surveyor. In management of this nature, there is a real danger that nonprofessional personnel will assume, or appear to assume, professional duties and that supervision will be inadequate. It is essential that the client-surveyor relationship be retained in the practice of land surveying.

Analysis of the Committee

Schlachter was, at all material times, an ALS. Terre-Alta Corp. was, at all material times, a surveyor’s corporation. On the other hand, at all material times, Schlachter’s partner, Lock, was not an ALS, nor was his company, TASSI, a surveyor’s corporation. Thus, only Schlachter and Terre-Alta Corp. were able to engage in the practice of land surveying. However, Schlachter failed to maintain this distinction and, in doing so, he failed to assist in preventing the unauthorized practice of land surveying and, consequently, breached s. 2(8) of the Code of Ethics.

Unauthorized Practice

The Committee notes that, with respect to the RPRs in issue in this matter, TASSI performed almost all of the essential tasks. It was TASSI who made the initial client contact. TASSI’s crew did the field work for

the RPR. TASSI sent the RPR to the client and TASSI invoiced the client for the work.

The Committee also points to the “listing of services offered” and the quotations submitted as evidence, all under TASSI’s letterhead, as evidence that land survey work was actively being sought by TASSI, notwithstanding the fact that TASSI was not allowed to engage in the practice of land surveying.

The Committee finds that this created a situation where, to a member of the public, TASSI would have appeared to be a surveyor’s corporation. Indeed, one of Schlachter’s clients, Pentagon Structures, only became aware that TASSI was not a surveyor’s corporation when they contacted ALSA seeking clarification of ALSA’s insurance requirements for membership. The client’s surprise is made clear by his statement: “I think they are all one and the same company making a claim that they are land surveyors.”

The Committee finds that this misleading situation constituted unauthorized practice on the part of TASSI.

Schlachter’s Conduct

Although no single act caused Schlachter to fail in his professional obligation to assist in preventing the unauthorized practice of land surveying, his conduct as a whole amounted to a breach of s. 2(8) of the Code of Ethics. Schlachter failed to heed a number of warning signs and, in doing so, created a situation where unauthorized practice could occur. First, Schlachter was aware that his partner in Terre-Alta Corp. was also running his own business under the name Terre-Alta Surveys and Services Inc. Given the similarity between the names and the overlap in the people involved and the business carried on by these two corporations, Schlachter ought to have realized that the general public would likely perceive a connection between the two businesses and potentially be confused as to which of the two was

the surveyor’s corporation.

Indeed, the Committee notes that, in his formal response to the complaint in question, Schlachter told the Chairman of the Discipline Committee, Mr. Allred, that on December 13, 2002, he spoke with Lock and expressed “grave concern that (Lock) or his staff may be promoting themselves as Alberta Land Surveyors.” Schlachter noted that he had discussed this concern with Lock before.

Further evidence of Schlachter’s inattention to the potential pitfalls of the situation in which he found himself is found in Schlachter’s invoicing practices. Schlachter testified that, in the normal course of a project, he would prepare an invoice directly to the client and forward it to Lock’s wife, who was the administrator of his surveyor’s corporation, to send out to the client. However, in the case of at least one RPR, the invoice prepared by Schlachter does not appear to have been the one received by the client. Rather, the client received, and paid, an invoice prepared by and sent from TASSI for the RPR. Schlachter claims to have had no knowledge of TASSI’s invoice. The Committee finds, however, that Schlachter ought to have realized that something was amiss when he either received payment from TASSI, as opposed to the client, or did not receive payment at all.

Although the fact that Schlachter ought to have been aware that the public would potentially be misled by the interaction between Terre-Alta Corp. and TASSI is not, by itself, an example of misconduct, it shows the context in which Schlachter was acting. In these circumstances, Schlachter ought to have been more wary of possible misrepresentations to the public.

Unfortunately, however, he was not. Instead, Schlachter “muddied” the distinction between the two businesses by allowing TASSI to make the initial client contacts and to bid for and obtain jobs. As is discussed in more detail below, such an

arrangement deviates from direction in the Manual of Standard Practice that all client liaising should be carried out by the ALS or surveyor’s corporation directly.

Likewise, when Schlachter moved to Calgary, he left the administration of his surveyor’s corporation in Edmonton, under the supervision of Lock’s wife. At the same time, he continued to subcontract TASSI to perform some of the field duties required in the day to day operation of his surveyor’s corporation. In doing so, Schlachter deviated from the direction in Part B, s. 1.9 of the Manual of Standard Practice that an ALS ought not “establish offices or branches unless these centres are under the full-time direction and management of a resident ALS.” The directions in the Manual of Standard Practice specifically note the dangers inherent in operating branch offices and using subcontractors. As s. 1.9 of Part B states, “in management of this nature, there is a real danger that nonprofessional personnel will assume, or appear to assume, professional duties and that supervision will be inadequate.” Schlachter’s conduct in this case shows a complete disregard for these potential risks. This disregard created a situation where, not only *could* unauthorized practice occur, it actually did.

The Committee is of the opinion that Schlachter knew, or ought to have known, that he was allowing, if not fostering, a situation to continue that could give his clients the misleading impression that TASSI was a surveyor’s corporation, or that TASSI could offer services that can only be provided by an ALS. In doing so, Schlachter failed in his professional obligation to assist in the prevention of the unauthorized practice of land surveying.

As a result, the Committee finds that Schlachter failed to adhere to the commentary set out in s. 1.9 of Part B of the Manual of Standard Practice and breached s. 2(8) of the Code of Ethics of ALSA.

Deviation from Part B, Sections 3.1.1 and 3.1.2 of the Manual of Standard Practice

The Committee agrees with the allegation that Schlachter deviated from the directions in Part B, ss.3.1.1 and 3.1.2 of the Manual of Standard Practice of ALSA in that he did not engage personally in client liaison and new business development, nor did he issue all work instructions on the project personally.

In the case of the RPR on Lot 16, Block 4, Plan 6228 HW, in his own words, Schlachter “had no knowledge of speaking with Klaus of Pentagon Structures,” who was, supposedly, his client. Moreover, Lock, in his capacity at TASSI, referred the project to Schlachter on March 31, 2002, some 8 days after the title search on the property in question was already completed.

Additionally, the Committee notes that it was TASSI’s invoice, and not Schlachter’s, that the client paid. Such evidence tends towards the conclusion that TASSI pursued and was awarded the project by the client long before Schlachter was involved. Indeed, as noted above, Pentagon Structures did not even become aware that TASSI was not a surveyor’s corporation until they contacted ALSA seeking clarification of ALSA’s insurance requirements for membership.

Given the above, the Committee finds that Schlachter did not engage personally in client liaison and business development with respect to the above mentioned projects that he subcontracted to TASSI. The Committee finds that Schlachter deviated from the directions in ss. 3.1.1 and 3.1.2 of Part B of the Manual of Standard Practice.

Unprofessional Conduct and Unskilled Practice

Relevant Legislation

Section 35 of the *Land Surveyors’ Act*, R.S.A. 2000, c. L-3 (“LSA”) states that:

(1) Any conduct of a practitioner that, in the opinion of the Discipline Committee,

(b) contravenes a code of ethics of the profession as established under the regulations whether or not that conduct is disgraceful or dishonourable, constitutes either unskilled practice of surveying or unprofessional conduct, whichever the Discipline Committee finds.

Analysis of the Committee

As the Committee has found, Schlachter’s conduct breached the Code of Ethics. Thus, under s. 35 of the LSA, Schlachter’s conduct constitutes either unskilled practice or unprofessional conduct. Taking into account all of the circumstances of this particular case, the Committee finds that Schlachter’s actions constitute unprofessional conduct.

Disciplinary Action

Relevant Legislation

Sections 53 and 54 of the *Land Surveyors’ Act*, R.S.A. 2000, c. L-3 (“LSA”) states that:

(1) If the Discipline Committee finds that the conduct of an investigated person constitutes unskilled practice of surveying or unprofessional conduct, or both, the Discipline Committee may make any one or more of the following orders:

- (a) reprimand the investigated person;*
- (b) suspend the registration of an investigated person either generally or from any field of the practice of surveying for a period set by the Discipline Committee;*
- (c) suspend the registration of an investigated person either generally or from any field of practice until*
 - (i) the person has completed a specified course of study or obtained supervised practical experience, or*
 - (ii) the Discipline Committee is satisfied as to the competence of*

- the investigated person generally or in a specified field of practice;*
- (d) accept in place of a suspension the investigated person’s undertaking to limit the person’s practice;*
- (e) impose conditions on the investigated person’s entitlement to engage in the practice of surveying generally or in any field of practice, including the conditions that the person*
 - (i) practise under supervision,*
 - (ii) not engage in sole practice,*
 - (iii) permit periodic inspections by a person authorized by the Discipline Committee, or*
 - (iv) report to the Discipline Committee on specific matters;*
- (f) direct the investigated person to pass a particular course of study or satisfy the Discipline Committee as to the person’s practical competence generally or in a field of practice;*
- (g) direct the investigated person to satisfy the Discipline Committee that a disability or addiction can be or has been overcome, and suspend the person until the Discipline Committee is so satisfied;*
- (h) require the investigated person to take counselling or to obtain any assistance that in the opinion of the Discipline Committee is appropriate;*
 - (i) direct the investigated person to waive, reduce or repay a fee for services rendered by the investigated person that, in the opinion of the Discipline Committee, were not rendered or were improperly rendered;*
 - (j) cancel the registration of the investigated person;*
 - (k) any other order that it considers appropriate in the circumstances.*

Section 54 of the *Land Surveyors’ Act*, R.S.A. 2000, c. L-3 (“LSA”) states that:

(1) The Discipline Committee may, in addition to or instead of dealing with the conduct of an investigated person

- in accordance with section 53, order that the investigated person pay*
- (a) the costs of the hearing determined in accordance with the regulations,*
 - (b) a penalty not exceeding \$10,000 to the Association, or*
 - (c) both the costs and a penalty under clause (b), within the time set by the order.*

Analysis of the Committee

In making this disciplinary order, the Discipline Committee has taken into account, with due regard, the fact that Mr. Schlachter has admitted the breaches and allegations contained herein, and that he has cooperated and been proactive in preventing further damage to the public by relinquishing the permit to practice of Terre-Alta Corp. and changing the name of the corporation, so as to avoid further confusion on the public's part.

As well, the Committee has considered the joint submission as to the appropriate penalty in this case. Counsel for Schlachter and ALSA submit that the following penalties be imposed:

1. That Schlachter be sent a letter of reprimand.
2. That Schlachter pay the costs of this hearing within 6 months of the date of the Committee's decision.
3. That the findings of the Committee in this matter be set out in the subsequent publication of the *ALS News*. Although the Committee is not bound by the submissions of Counsel for Schlachter and ALSA with regard to the appropriate penalty to be imposed, the Committee finds that, taking into account the facts of this particular case, the above penalties are appropriate. Therefore, in consideration of the above findings, the Discipline Committee hereby orders:
 1. That Mr. Schlachter, ALS be sent a letter of reprimand, and that this letter be kept in his file at the office of the Alberta Land Surveyors' Association, and that it be published in the *ALS News*.
 2. That costs in the amount of \$5,617.31 for this hearing and deci-

sion, be paid by Mr. Schlachter within 6 months of this decision of the Discipline Committee.

3. That this order of the Discipline Committee be published in the *ALS News*.

Dated the 6th day of January, 2004.
The Discipline Committee of the Alberta Land Surveyors' Association.

Letter of Reprimand to Richard Schlachter, ALS

Re: Letter of Reprimand in Relation to Order of Discipline Committee dated the 8th day of August, 2003 Pursuant to a Hearing Held on the 9th day of July, 2003 into the Professional Conduct of Richard Schlachter, ALS

This letter constitutes a formal reprimand in relation to your professional conduct with respect to the findings of the discipline committee pursuant to a hearing held on July 9th, 2003.

The Committee considers the breach of your professional obligations with respect to the Code of Ethics as outlined in Section 2(8), Alberta Regulation 324/82 and reiterated in Part B, Section 1.9 of the Manual of Standard Practice as serious in nature. Part B, Section 1.9 states: *An Alberta Land Surveyor shall assist in preventing the unauthorized practice of land surveying*

More specifically the commentary to the code of ethics goes on to state in part: *An Alberta Land Surveyor shall:....not enter into any arrangement that will enable an unqualified person or corporate body to complete a land survey directly or indirectly....not establish offices or branches unless these centres are under the full-time direction and management of a resident Alberta Land Surveyor. In management of this nature, there is a real danger that nonprofessional personnel will assume, or appear to assume, professional duties.....It is essential that the client-surveyor relationship be retained in the practice of land surveying*

The committee also concluded you were in breach of Part B, Sections 3.1.1 and 3.1.2 of the Manual of Standard Practice which deals with technical services sub-contracting and requires that the Alberta Land Surveyor shall issue all work instructions and receive the completed work from the subcontractor in person. These sections also prohibit the hiring of subcontractors in a client liaison or new business development role.

The Committee reminds you that members of a profession are granted special concessions by society and these concessions should not be taken lightly. The land surveying profession is granted an exclusive area of practice and in return the members of the profession are obligated to not abuse the special concessions given to it. The integrity of the land surveying profession must be preserved in order for the public to be protected from the unauthorized practice of land surveying.

The Committee is disappointed you did not recognize the potential for abuse by continuing a long distance relationship with a nonprofessional organization once you had relocated to another city. Although the situation may have evolved quite innocently enough, it reinforces the importance of a land surveyor remaining diligent in order to maintain direct control over the practice of land surveying. Perhaps, this situation may serve as a warning to other members of our Association. Conceivably, it could help another land surveyor avoid being placed in a similar situation.

The Committee acknowledges that upon the situation being brought to your attention you did exhibit timely and cooperative behavior. You further demonstrated a proactive approach in dealing with any possible ramifications with respect to the situation. Although this type of response can not excuse you from failure to fulfill your professional obligations, it does reflect well on your character.

*THE DISCIPLINE COMMITTEE OF THE
ALBERTA LAND SURVEYORS' ASSOCIATION
DATED THIS 6TH DAY OF JANUARY, 2004*



history

This is the third in a series of articles on the history of the ALSA and its members. The ALSA will be publishing a book on the history of surveying in Alberta in time for the 2005 AGM.

1914 – “The Hoodooed Year”

In January of 1914, twenty-nine members were present at the Annual Meeting to commiserate with one another about the hard times that had descended upon them. In his presidential address, Mr. Charlesworth said “the thirteenth year of the present century has been referred to by many as the hoodooed year, and doubtless the members of this Association have all had a close acquaintance with the hoodoo. The decline in activity which occurred last year is due, not to local conditions, but to conditions which are world wide, and I am sure we all have the utmost faith in the future right here in Edmonton.” From this distance, that sounds a lot like whistling in the dark and trying to cast the blame for the collapse of local foolishness on the machinations of the international bankers or somebody else who had nothing to do with it; for there is no doubt that the town-site land boom was an unnecessary and irrational phenomenon based on little more than the over-optimism stirred up by speculators who were out to make a killing, and while it was all very well to proclaim the utmost faith in Edmonton’s future, it took nearly a whole generation before anything much happened to prove that that faith was justified.

The report of the 1914 meeting contains several items of interest which may be briefly mentioned. A resolution was passed instructing the Secretary to take up with the proper authorities the question of reciprocity as to the examinations for Dominion and Alberta Land Surveyors. There was also some discussion of a reciprocal arrangement with the Manitoba and Saskatchewan Boards of Examiners “as to the purely mathematical parts of the examinations,” but this was dropped for the reasons that it would mean getting The Alberta Land Surveyors Act amended and out of the 96 members then registered, only

two had been required to write any mathematical examination at the time of entry, the other 94 having been Dominion Land Surveyors before joining the Association.

The Secretary-Treasurer reported that during 1913, 490 letters had been received and 648 sent out; it is hard to tell what could have caused this extraordinary volume of correspondence, but it will probably stand as an unbeaten record for many years to come. The financial statement showed that the Association, as evidence of its faith in the future of Edmonton, had invested all its surplus funds, totalling \$3,550, in property mortgages; the reports of later years indicate that this was not a very good stroke of business. A letter was read from one of the Calgary members complaining at length about various clauses in the new subdivision regulations and asking the Association to have them modified or rescinded. Mr. R.H. Knight read a paper, which unfortunately was not included in the annual report, entitled “A tariff of charges for Alberta Land Surveyors.” This apparently generated a little heat. A motion was made that a committee be appointed to prepare a minimum tariff of fees, to be adopted by by-law, which led Mr. Charlesworth to vacate the chair and speak against the motion on the ground that there was absolutely no statutory provision which gave the Association any right to establish such a tariff. Nevertheless, the motion was carried. Mr. Charlesworth, who had been President for two successive years, was succeeded in that office by Mr. R. W. Cautley, whose brother, Mr. R. H. Cautley, replaced him as Secretary-Treasurer and Registrar.

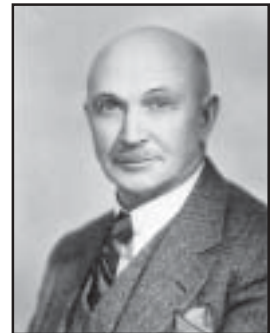
The new Council did not hold a meeting until December, 1914. By that time, the Kaiser’s War had broken out and caused the Council to adopt the following resolution:

“That in view of the situation created by the war, the Association’s dinner this year be made a very simple one for which participating members shall pay \$1.00 per head and that the Entertainment Committee be authorized to expend not more than \$75.00 of the Association’s funds to meet any additional cost; and further that the Secretary-Treasurer be authorized to pay the North and South Alberta Patriotic Funds \$100.00 each in the name of the Association.”

Profile

Lionel C. Charlesworth

Lionel Charlesworth was Alberta’s first Director of Surveys - a position he held from 1905 to 1915. In 1915, he was appointed



Deputy Minister of Alberta Public Works and also served as Deputy Minister of Railways and Telephones until 1921. Until his retirement in 1945, he devoted his life to the highly important work of irrigation in southern Alberta, and was instrumental in establishing the Eastern District in 1935.

Mr. Charlesworth was a charter member of the Alberta Land Surveyors’ Association and the Association’s second president - serving in 1912 and 1913. Mr. Charlesworth also served as president of the Association of Professional Engineers.

He was made an honorary life member of the Alberta Land Surveyors’ Association in 1946.

Richard H. Knight

Richard H. Knight was born in the little town of Bruce Mines on Georgian Bay. He attended public school there



and high school at Port Arthur and Richmond Hill. He graduated from the School of Practical Science at Toronto in 1902 and supplemented this course by post graduate work in mining and metallurgy, receiving the degree of B.A.Sc., from the University of Toronto.

The early part of Mr. Knight's surveying and engineering career was

spent in Northern and Western Ontario where he was actively engaged in the location and construction of the Algoma Central and Hudson Bay railway, the Algoma Eastern railway, and the Lake Huron and Northern Ontario railway.

In December 1905, Mr. Knight married Miss Ada McKinley, B.A., of Seaforth, Ontario, a graduate of the University of Toronto, and the following year took up residence in Edmonton. Here he joined the engineering firm of A. Driscoll & Co., and under the new firm name of Driscoll & Knight carried on a general engineering and surveying practice.

In 1904, Mr. Knight obtained his commission as Dominion Land Surveyor and since 1906 had been

engaged almost yearly on some type of survey work for the Dominion Government.

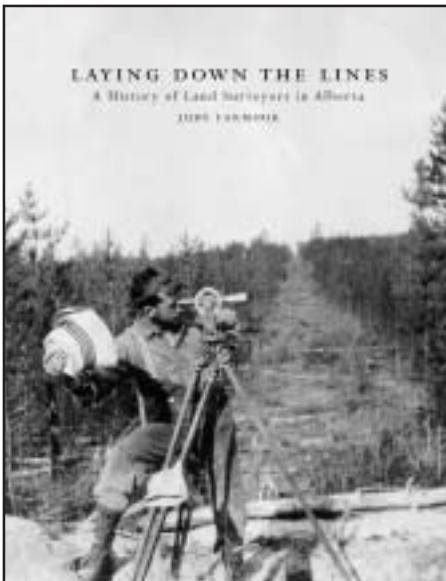
He moved to Ottawa, and became a member of the staff of the Topographical Survey of Canada.

While in Alberta he was an active member of the Alberta Land Surveyors' Association and the Professional Engineers of Alberta. He served as president of the ALSA and, for a number of years, was the representative of the Association on the Senate of the University of Alberta.

He died suddenly at Jasper Park on October 16, 1931. For the previous five years, he had been superintendent of Jasper Park, where his pleasing personality had made a host of friends.

Pre-Order Now—Coming April 2005 Laying Down the Lines: A History of Land Surveyors in Alberta

By Judy Larmour



Hardcover, 352 pages plus jacket—
Brindle & Glass publishers

Historian Judy Larmour is putting the finishing touches on her latest book, *Laying Down the Lines: A History of Surveyors in Alberta*. This Alberta Land Surveyors' Association commissioned publication includes legendary surveyors and explorers David Thompson and Peter Fidler right up to today's modern Alberta Land Surveyors.

This book tells the story of land surveyors and their incredible challenges and hardships as well as their often amusing stories. Read about the tragic death of Henry Selby and the surveyors' connection to Edmonton's infamous Cecil Hotel.

Chapters include Mastering A Dry Land: Land Surveyors and Irrigation (Chapter 4), The Challenge of Surveying Alberta's North (Chapter 6), and Urban Provincial and Professional Affairs in the Glory Days to World War I (Chapter 8).

To pre-order *Laying Down the Lines* by Judy Larmour please contact the Alberta Land Surveyors Association at (780) 429-8805 or order online at www.alsa.ab.ca/book.pdf. There is no payment required now. Books will be \$40 each plus shipping and handling when they become available in April 2005.